

# Whitfield County Schools



## Standards Overview

# Our Core Business



Is it true to our **Vision**?

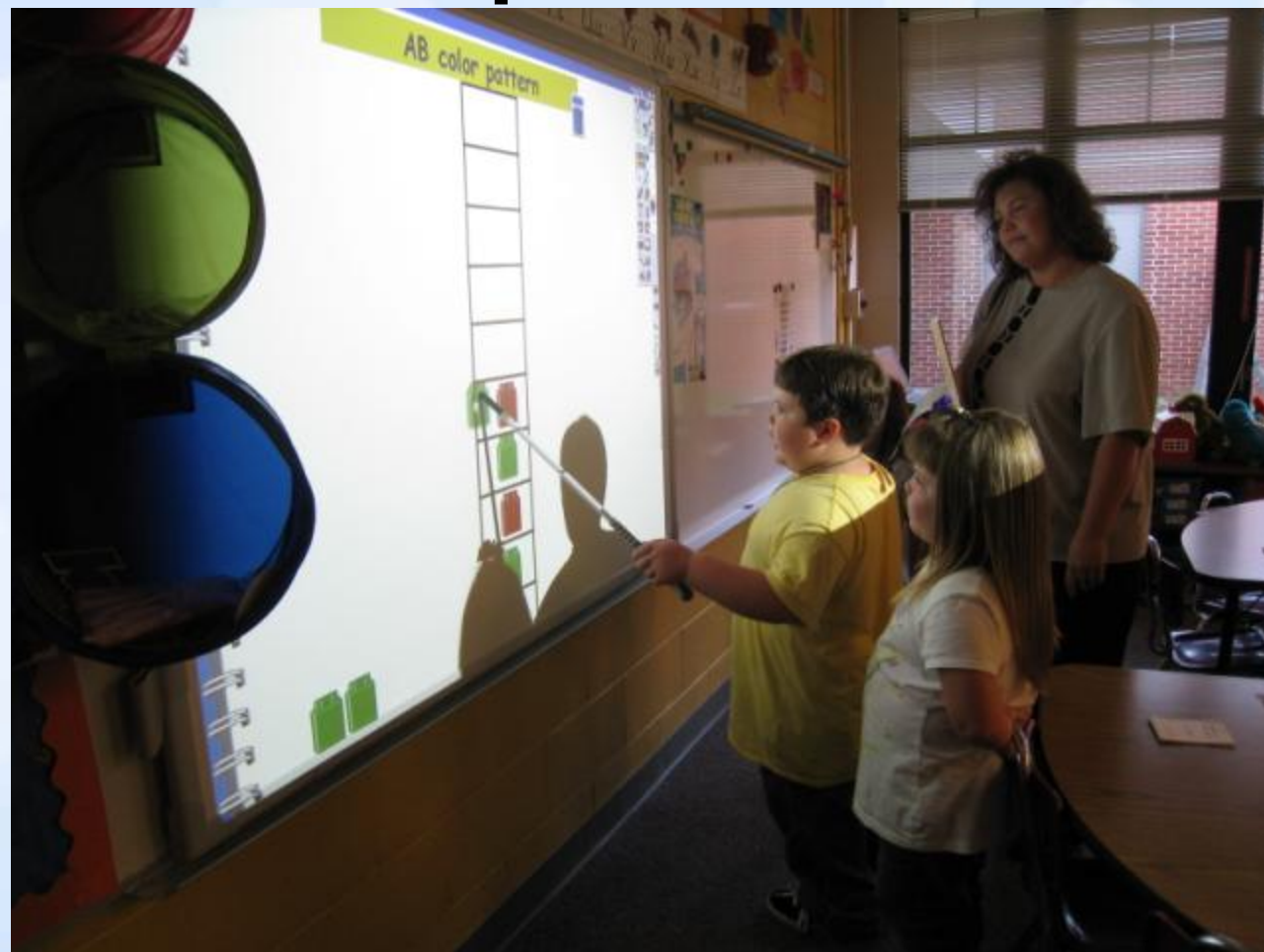
Does it align with our **Beliefs**?

Will it help us achieve our **Mission**?

# STANDARD ONE



## Vision and Purpose



# Vision and Purpose



## **VISION**

We envision a responsive school district focused on students and that is valued and respected by the community.

# Vision and Purpose



## **MISSION**

Our mission is to increase student learning by providing students and staff with meaningful, challenging, and engaging educational experiences in a safe and supportive environment.

# Vision and Purpose



## **BELIEF ONE**

We believe in our school district having an innovative unified focus resulting in it being responsive to the needs of students, parents, and the community at large

# Vision and Purpose



## **BELIEF TWO**

We believe that our core business is providing students with engaging, challenging, and meaningful work.

# Vision and Purpose



## **BELIEF THREE**

We believe that the role of teacher is leader and designer of engaging, challenging and meaningful learning experiences for students.

# Vision and Purpose



## **BELIEF FOUR**

We believe that all of our personnel, parents, and other community members are vital to the education of our students whose attention and commitment must be earned.

# Vision and Purpose



## **BELIEF FIVE**

We believe that all of our students, personnel, and parents deserve a safe, inviting, non threatening learning environment where they are treated with dignity and respect.

# Vision and Purpose



## DEVELOPING DISTRICT-LEVEL CAPACITY



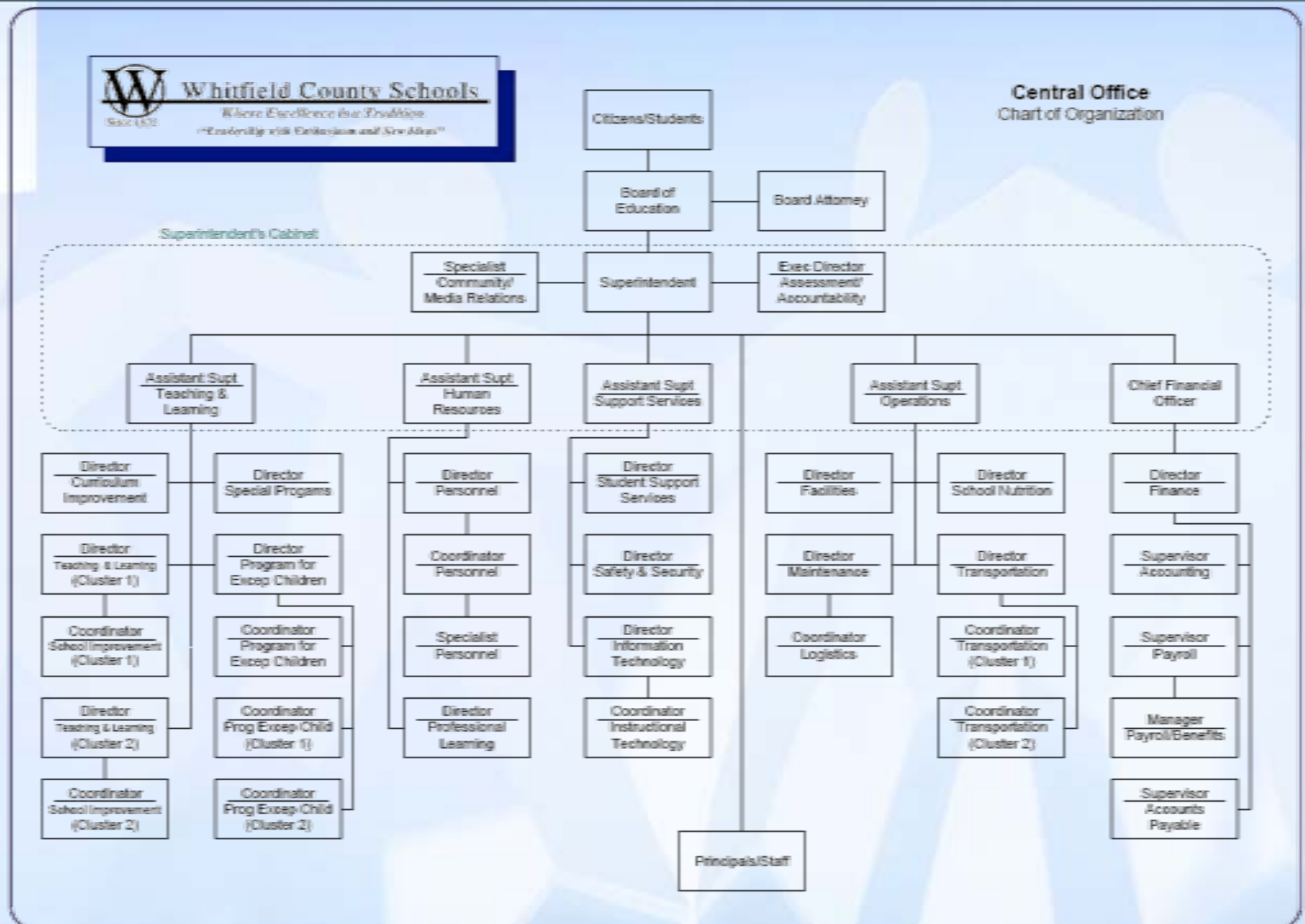
# STANDARD TWO



## Governance and Leadership



# Governance and Leadership



# Governance and Leadership



Whitfield County Schools is committed to developing structures for participatory leadership and developing structures for continuity.

# Governance and Leadership



All stakeholders are viewed as vital in the decision-making process in Whitfield County Schools.

- System level design team
- School level design teams
- Inclusion of parents, students, and community in design of new schools
- Inclusion of parent and community on principal interview teams

# STANDARD THREE



## Teaching and Learning



# Teaching and Learning



**The system provides research-based curriculum and instructional methods that facilitate achievement for all students.**



# Teaching and Learning



## Georgia Performance Standards

Welcome to [GeorgiaStandards.org](http://GeorgiaStandards.org)



English  
Language Arts



Mathematics



Social Studies



Science



CTAE



Modern  
Languages & Latin



Reading



Teachers  
as Advisors

# Teaching and Learning



**Engaging Work for Students**

# Teaching and Learning



## Increase Online Learning Opportunities



# STANDARD FOUR



## Documenting and Using Results



# Documenting and Using Results



Name \_\_\_\_\_

## Language Arts 8 Pre and Post Assessment: Pronouns

**ELA8C1. The student demonstrates understanding and control of the rules of the English language, realizing that usage involves the appropriate application of conventions and grammar in both written and spoken formats. The student:**

- a. Declines pronouns by gender and case, and demonstrates correct usage in sentences.

### Kinds of Pronouns

*Select the letter of the term that describes the underlined pronoun in each sentence.*

- a. personal pronoun
- b. possessive pronoun
- c. indefinite pronoun
- d. reflexive pronoun
- e. intensive pronoun
- f. interrogative pronoun
- g. demonstrative pronoun

- \_\_\_\_ 1. Which is your coffee cup?
- \_\_\_\_ 2. A bus driver gave me directions to Grover Falls.
- \_\_\_\_ 3. The seamstress pricked herself with a sewing needle.
- \_\_\_\_ 4. That gray van with a dented fender is ours.
- \_\_\_\_ 5. Those look like spotted owls over there.
- \_\_\_\_ 6. Anybody can come to the dance on Friday night.
- \_\_\_\_ 7. Even Mom herself can't beat me at checkers.

Assessments are  
a valued tool to  
be employed  
collaboratively by  
all teachers and  
administrators to  
address  
curricular and  
instructional  
strengths and  
weaknesses.

# Documenting and Using Results



The system is careful to communicate with stakeholders as to the various measures of student success.

# Documenting and Using Results



The system employs all available resources to communicate system, school, and individual student assessment results.

# Documenting and Using Results



System and school data rooms serve as central areas to interpret assessment results. Comparative data to comparable schools and systems are used to gauge results.

NHMS CRCT Similar School Comparison

2008	Whitfield	Georgia	Calhoun	Barrow	Hall	Habersham
Grade 6	New Hope	Georgia	Calhoun	Winder Barrow	West Hall	North Habersham
Reading	97	91	91	92	93	93
LA	91	87	87	84	82	90
Math	87	69	72	56	58	77
Science	75	66	72	66	61	78
Grade 7	New Hope	Georgia	Calhoun	Winder Barrow	West Hall	North Habersham
Reading	94	88	90	86	83	92
LA	95	90	95	89	83	93
Math	93	80	91	70	72	90
Science	84	75	82	72	71	87
Grade 8	New Hope	Georgia	Calhoun	Winder Barrow	West Hall	North Habersham
Reading	92	91	91	86	89	97
LA	92	89	89	84	88	97
Math	73	62	59	50	79	80
SS	65	59	76	50	57	76
Science	69	60	75	56	64	83
MGWA	New Hope	Georgia	Calhoun	Winder Barrow	West Hall	North Habersham
	73	80	75	68	78	86

# STANDARD FIVE



## Resources and Support Services



# Resources and Support Systems



## Human Resources

- Recruit, employ & mentor professional & support staff committed to designing quality work for students.
- Provide professional learning that develops competencies tailored to the district's vision, mission, & beliefs.

# Resources and Support Systems



## New Teacher Induction



# Resources and Support Systems



## Professional Learning



# Resources and Support Systems



## Financial Resources

- Allocations decisions based on system vision, mission and beliefs
- Administrators given flexibility within scheduling and budgets
- Long-range planning encouraged through allocation rollover election

# Resources and Support Systems



## Physical Resources

### **2006 ESPLOST** (approximately \$96 million)

- New 1200 Student High School
- New 600 Student Elementary School
- Antioch Elementary – Additions & Renovations
- Dug Gap Elementary – Additions & Renovations
- Eastside Elementary – Renovations
- Varnell Elementary – Renovations
- Eastbrook Middle – Additions & Renovations
- Northwest High – Renovations
- Southeast High – Renovations
- Career Academy – Gymnasium Addition
- Technology Upgrades – All Schools

# Resources and Support Systems



## **ACTIVboards**

**All elementary & middle schools**



# Resources and Support Systems



**Additional computers in classrooms  
and labs**



# Resources and Support Systems



## Support Systems

- School & county newsletters
- Nurse serves each school
- Health Fairs
- Counselors, social workers, graduation coaches, homeless liaison, parent involvement coordinators, outreach
- Door access, security cameras, ConnectED, staff ID badges
- Parent nights, extra-curricular activities, clubs, PTA/PTO's
- Live Scan Finger Print for all new hires
- ESOL, Reading Recovery, NovaNET
- Kids Club, Buddy Programs

**Whitfield County Schools**  
Since 1872 *Where Excellence is a Tradition*

June 2008 Volume 1, Number 1

Our Board of Education members are Chairman Tim Treu, vice chairman Chuck Oliver, Gary Brock, Jerry Nealey and John Thomas. Our superintendent is Dr. Katie Brochu.

### Teachers 'Working on the Work' to help students learn lessons

**Español**  
Para ver la versión de esta hoja informativa en español favor de visitar el website [www.whitfield.k12.ga.us](http://www.whitfield.k12.ga.us) o comunicarse con la escuela de su niño para que le envíen una copia.

#### Classroom levels of engagement

Author and educator Phillip C. Schlechty outlines five levels of engagement. They are:

**Authentic engagement:** The task, activity, or work the student is assigned or encouraged to undertake is associated with a result or outcome that has clear meaning and relatively immediate value to the student.


**Ritual engagement:** The immediate end of the assigned work has little or no inherent meaning or direct value to the student, but the student associates it with outcomes and results that are of value.

**Passive compliance:** The student is willing to expend whatever effort is needed to avoid negative consequences, although he or she sees little meaning in the tasks assigned or the consequences of doing those tasks.

**Retreatism:** The student is disengaged from the task, expends no energy in attempting to comply with the demands of the tasks, but does not act in ways that disrupt others and does not try to substitute other activities for the assigned task.

**Rebellion:** The student summarily refuses to do the task assigned, acts in ways that disrupt others, or attempts to substitute tasks and activities to which he or she is committed in lieu of those assigned or supported by the school and by the teacher.

Source: "Working on the Work," by Phillip C. Schlechty



Teachers use different methods to measure student engagement in the classroom. This teacher asks students to place straws in a cup after lessons to show how engaged they were in the day's lessons.

Student engagement. 'Working on the work.' You may have heard these terms at your child's school, but do you know what they mean? Working on the work, often referred to by the acronym 'WOW' by school staff members, defines the teachers' daily goals to continue improving their lessons and keep students engaged.

Whitfield County teachers work to get feedback from students about their lessons to learn what works and what doesn't. The work must not only be interesting, but engaging.

Student engagement does not simply mean students are being good and turning in their work. Engagement means the students are actively learning a lesson by becoming a part of the work and interacting with their teachers and classmates.

ActivBoards, the digital whiteboards hanging in most classrooms now, are one tool that keeps students engaged. The ActivBoards are basically like large touch-screen computers that allow teachers to share Web sites and interactive lessons with their students.

The philosophy that drives instruction in Whitfield County Schools is based on the work of Phillip C. Schlechty, the founder and chief executive officer of the Center for Leadership in School Reform. For more information about Schlechty's organization, visit [www.schlechtycenter.org](http://www.schlechtycenter.org).

# STANDARD SIX



## Stakeholder Communications & Relationships



# Stakeholder Communications & Relationships



**We value input from parents, students, staff, and the community.**



# Stakeholder Communications & Relationships



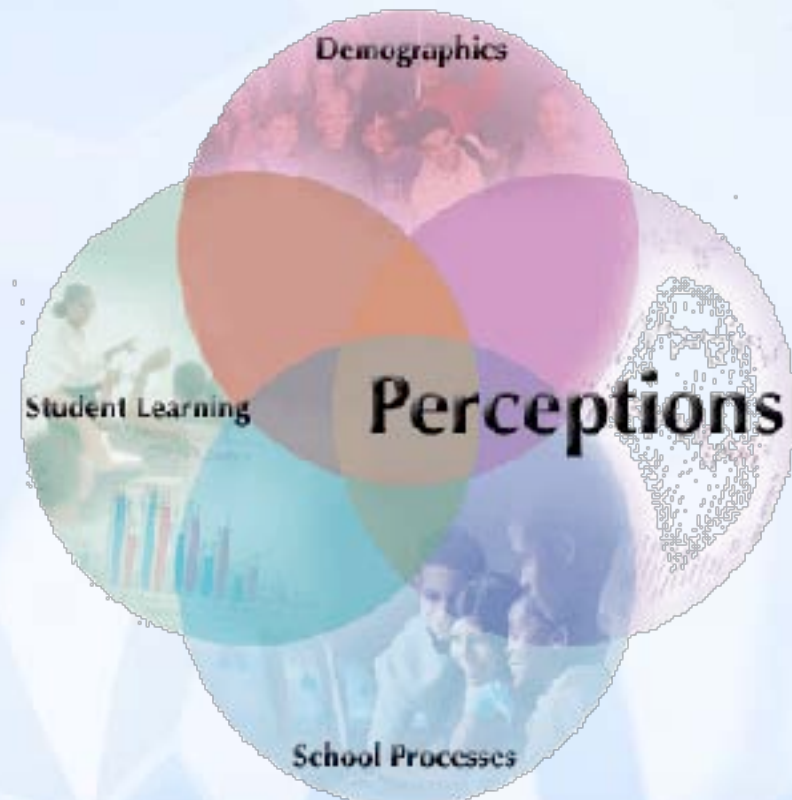
**Technology enhances opportunities for stakeholders to communicate.**



# Stakeholder Communications & Relationships



## Annual needs assessment through Bernhardt surveys online



# Stakeholder Communications & Relationships



## Parent Portal on Infinite Campus

The screenshot shows a web browser window with multiple tabs. The active tab is titled "Campus Parent Portal Login". The page features the "Infinite Campus" logo and a welcome message: "Welcome to the Whitfield County Campus Portal. Here you will find instant access to accurate, current and confidential information about your child(ren)'s school attendance, grades, class assignments and more!" Below this, there are language selection options: "In English", "En Español", "中文简体", and "中文繁體".

The main content area is divided into two sections. The first section, "First time using Campus Portal?", provides instructions: "If you have been assigned a Campus Portal Activation Key, [click here](#). If you do not have an Activation Key, [click here](#)". The second section, "Already have a Campus Portal account?", contains a login form with fields for "User Name" and "Password", a "Log In" button, and a link for "Problems logging in?".

Below the login form is a "District Notices" section. It includes a date stamp "[ 2008-09-09 ]" and a notice about Driver's Education classes at Dalton State College, starting September 15. The notice describes the curriculum, including vehicle operation, motorist responsibility, and traffic laws. It also mentions that each participant receives 30 hours of classroom instruction and 16 hours of behind-the-wheel instruction. The notice concludes with the statement "THIS PROGRAM COMPLIES WITH JOSHUA'S LAW. \*Georgia Learner's Permit required\*" and provides a phone number (272-4454) and a website ([www.daltonstate.edu](http://www.daltonstate.edu)) for more information.

At the bottom of the page, there is a small copyright notice: "©2007-2009 Infinite Campus, Inc."

# Stakeholder Communications & Relationships



## School & District websites

**Cohutta Elementary School**  
Catch as if you can!!

Home/Links Faculty School Information What's Going On!

**WELCOME BACK, STUDENTS AND PARENTS!**

Cohutta Elementary  
264 Webb Dr.  
Cohutta, GA 30710  
Phone: 706-694-4802  
Fax: 706-694-4386  
Principal: Alyson Wilson

Whitfield County Schools

Home Calendar Schools Departments Policy Foundation About WCS Employees Parents Login

**Vision, Mission, & Beliefs**

**Vision**  
We envision a responsive school district that is focused on students and that is valued and respected by the community.

**Mission**  
Our mission is to increase student learning by providing students and staff with meaningful, challenging, and engaging educational experiences in a safe and supportive environment.

**Beliefs**

1. We believe in our school district having an innovative unified focus resulting in it being responsive to the needs of students, parents, and the community at large.
2. We believe that our core business is providing students with engaging, challenging, and meaningful work.
3. We believe that the role of teacher is leader and designer of engaging, challenging and meaningful learning experiences for students.
4. We believe that all of our personnel, parents, and other community members are vital to the education of our students whose attention and commitment must be earned.

Search WCS

Search:  Go

**Web site transition**

If you need to access the former Whitfield County Schools Web site, visit <http://www.whitfield.k12.ga.us/oldsite/>. It will remain in place during the transition to the new web site.

WCS good news

# STANDARD SEVEN



## Commitment to Continuous Improvement



# Commitment to Continuous Improvement



## Working on the Work Framework



# Commitment to Continuous Improvement



## **Working on the Work (WOW) Framework**

- The WOW framework has been incorporated throughout the system to build leadership capacity in the district.

# Commitment to Continuous Improvement



Teachers and staff are trained to perform as leaders, and administrators serve as leaders of these leaders.





# Whitfield County Schools



## Standards Overview