



Whitfield County Schools
Accreditation Review
November 3–6, 2013

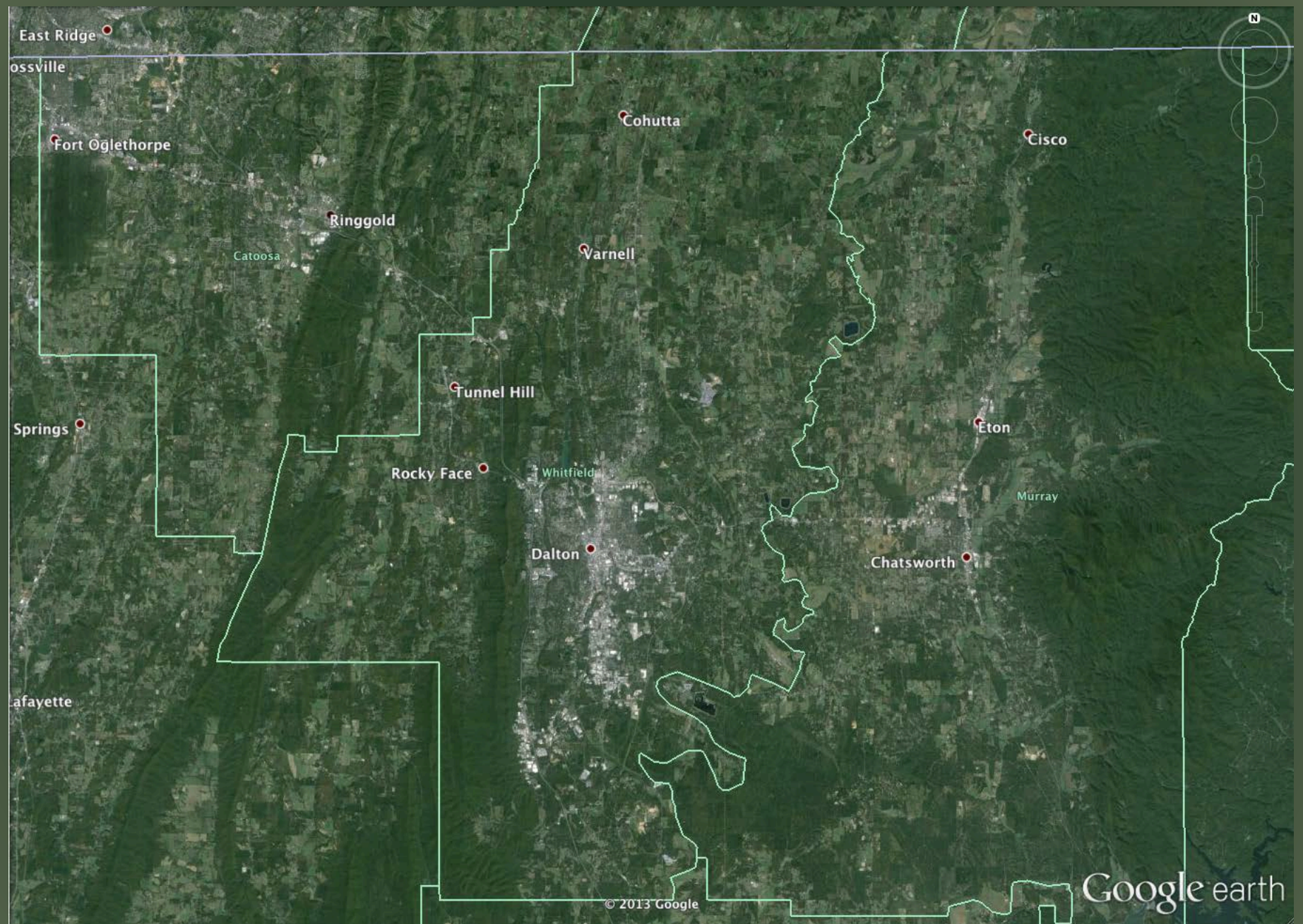


DESCRIPTION OF SCHOOL SYSTEM



Image Landsat
Data SIO, NOAA, U.S. Navy, NGA, GEBCO
Image IBCAO

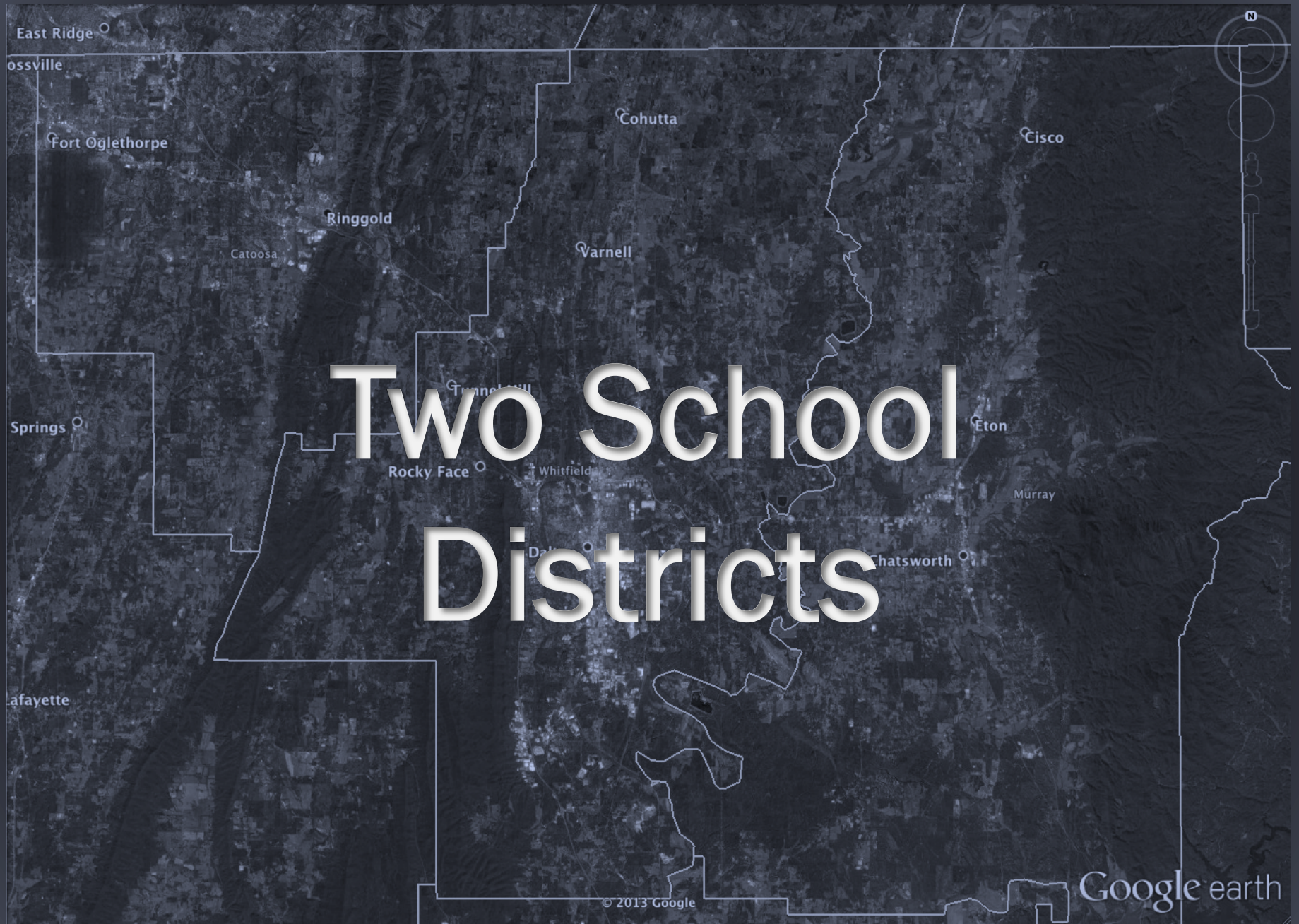
Google earth







Two School Districts



© 2013 Google

Google earth



A satellite map of Whitfield County, Georgia, with school district boundaries outlined in white. The map includes labels for various towns and cities: East Ridge, Rossville, Fort Oglethorpe, Catoosa, Ringgold, Cohutta, Varnell, Cisco, Eton, Murray, Rocky Face, Whitfield, Dalton, and Lafayette. The text 'Whitfield County Schools' and 'Dalton City Schools' is overlaid in large white font. A north arrow and a scale bar are in the top right corner. The Google Earth logo and copyright information are in the bottom right corner.

Whitfield County Schools

Dalton City Schools

© 2013 Google

Google earth

Demographics



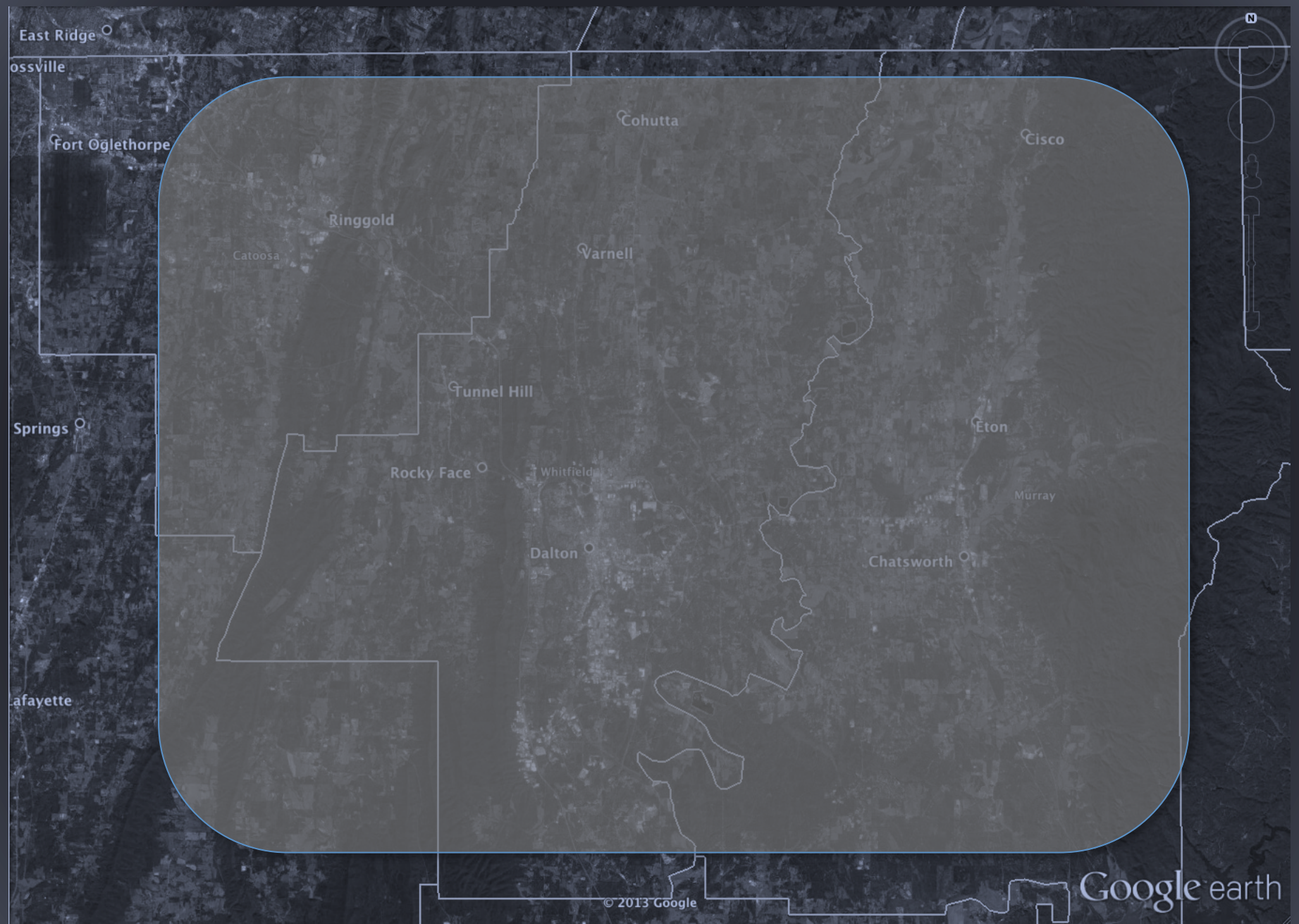


A satellite map of Georgia counties is shown in the background. A semi-transparent dark box with rounded corners is overlaid in the center, containing white text. The text lists the County Population, WCS Enrollment, and DPS Enrollment. The map shows various counties with labels such as East Ridge, Oostville, Fort Oglethorpe, Ringgold, Catoosa, Varnell, Cohutta, Cisco, Tunnel Hill, Rocky Face, Whitfield, Murray, Dalton, and Lafayette. A north arrow is visible in the top right corner.

County Population – 102,599

WCS Enrollment – 13,301


DPS Enrollment – 7,564





A satellite map of a region in Georgia, USA, with a semi-transparent dark gray overlay box containing demographic data. The map shows various towns including East Ridge, Oostville, Fort Oglethorpe, Kinggold, Cohutta, Cisco, Varnell, Eton, Murray, Clatsworth, Dalton, Rocky Gap, and Lafayette. A compass rose is in the top right corner, and the Google Earth logo and copyright notice are at the bottom.

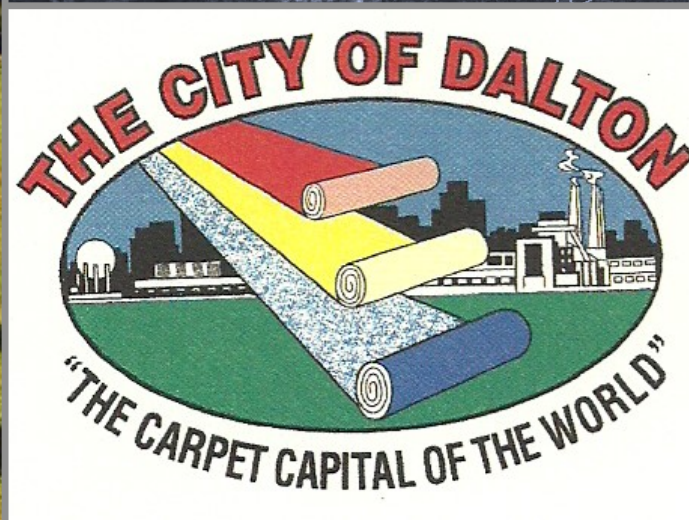
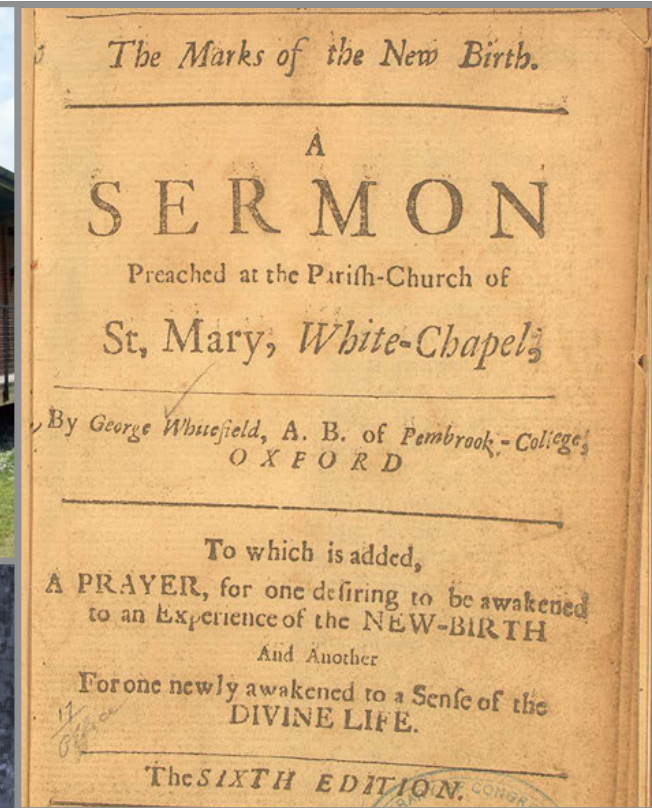
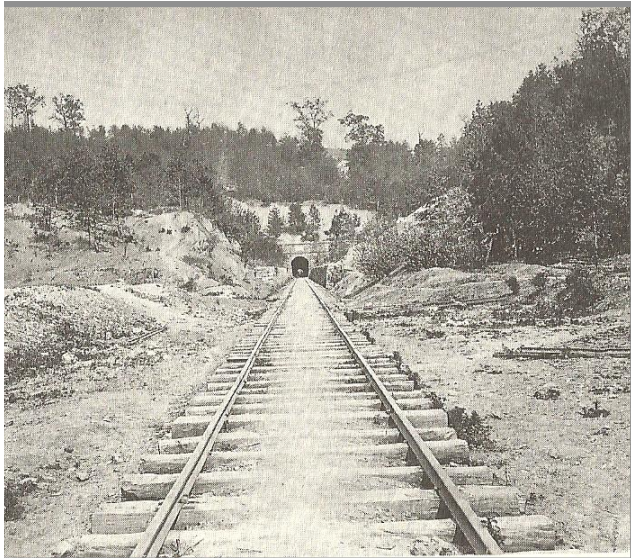
| | |
|-------------------|--------|
| Hispanic | 38.99% |
| Black | 1.68% |
| American Indian | 0.42% |
| Two or More Races | 2.87% |
| Pacific Islander | 0.03% |
| Asian | 0.90% |
| White | 55.11% |



72% of students eligible for
Free & Reduced Meals,
a 201% *increase* since 1995

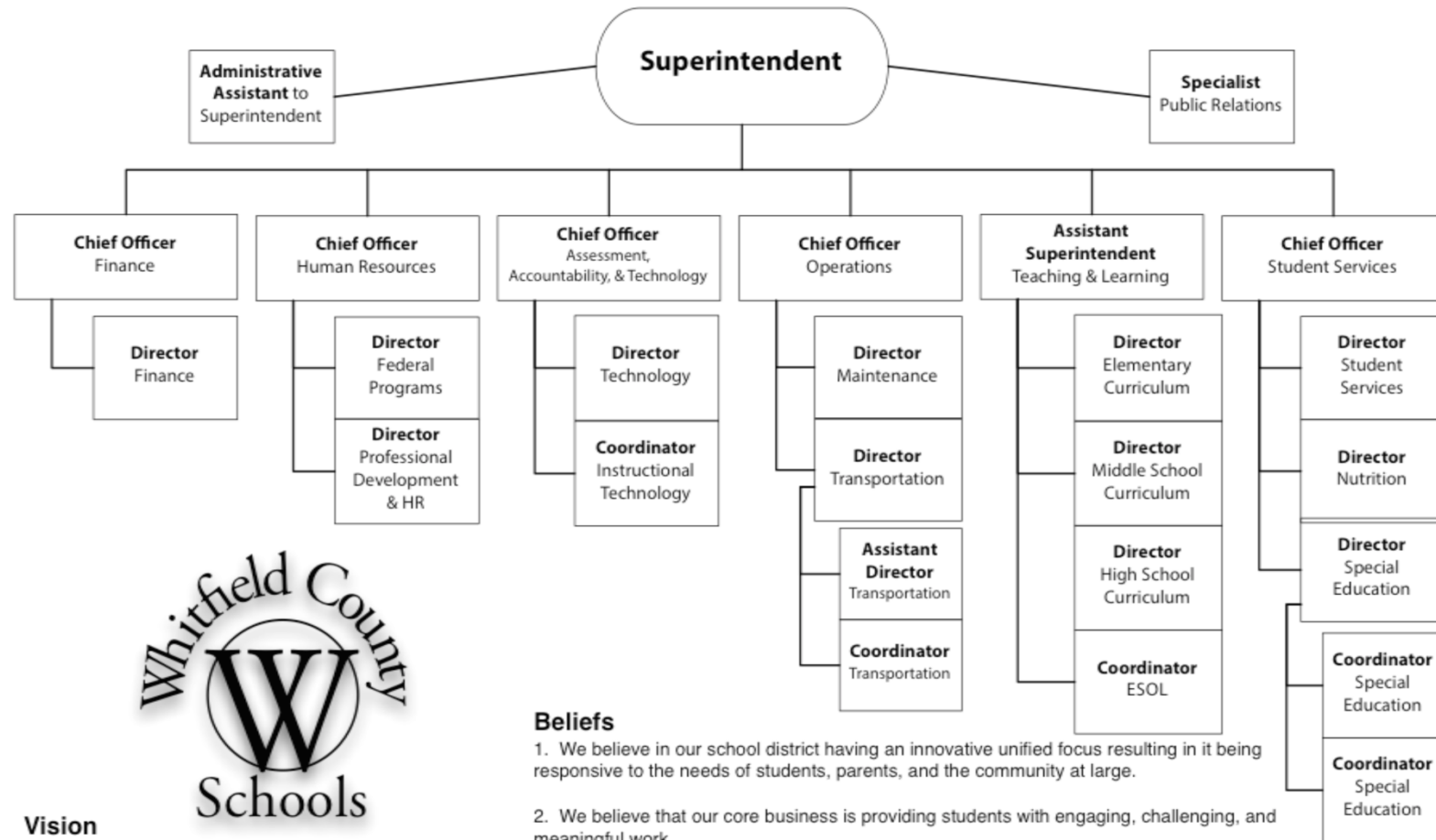
Local Economy





Our Organization





Vision

We envision a responsive school district that is focused on students and that is valued and respected by the community.

Mission

Our mission is to increase student learning by providing students and staff with meaningful, challenging, and engaging educational experiences in a safe and supportive environment.

Beliefs

1. We believe in our school district having an innovative unified focus resulting in it being responsive to the needs of students, parents, and the community at large.
2. We believe that our core business is providing students with engaging, challenging, and meaningful work.
3. We believe that the role of teacher is leader and designer of engaging, challenging and meaningful learning experiences for students.
4. We believe that all of our personnel, parents, and other community members are vital to the education of our students whose attention and commitment must be earned.
5. We believe that all of our students, personnel, and parents deserve a safe, inviting, non threatening learning environment where they are treated with dignity and respect.

Improving Communications

“As I visit our schools, I continue to be amazed by the generosity of this community. Every day countless people give so much of their time and resources to help meet the needs of others, especially the needs of our children in Whitfield County.”

—October Daily Citizen article



Whitfield County Schools
Accountability Report • Fall 2013

Louis Fordham, School Board Chairman VOLUME 1, ISSUE 1 Judy Gilbreath, Superintendent

WHEN THE WHITFIELD COUNTY SCHOOL SYSTEM was established in 1872, its primary purpose was to educate children when they were not needed on the family farm. A lot has changed since then! The family of Whitfield County Schools comprise the 26th-largest of Georgia's 180 public school districts. Approximately 13,200 students attend 24 schools that include 13 elementary schools, five middle schools, three comprehensive high schools, one charter high school career academy, an alternative school, and one special-purpose high school. We believe the best way to learn about our schools is to see them in action. We encourage you to visit any of our schools for a firsthand experience of the teaching and learning happening every day in Whitfield County Schools.

In this report...

- Criterion-Referenced Competency Test (CRCT)
- Measures of Academic Progress (MAP)
- End of Course Test (EOCT)
- College Entrance Exams (ACT and SAT)
- AP Courses Available
- Dual Enrollment
- STEM Information
- College Scholarships
- Career Pathways
- Industry-Certified Courses
- Whitfield Education Foundation Innovative Teaching Grant Awards
- See inside for more...

District Info

Whitfield County Schools
www.whitfield.k12.ga.us
P.O. Box 2167
1306 South Thornton Avenue
Dalton, GA, 30721
(706) 217-6780
Our building is open to the public from 7 a.m. until 5 p.m.



LEARN HOW OUR THIRD-GRADE READERS ARE DOING. MORE INFO ON PAGE 2!

Helping Children & Families in Whitfield County

SUMMER 2013 marked the 10th year school nutrition leaders prepared healthy meals for any child under 18 who visited one of 54 locations. The Summer Food Service Program (SFSP) was established to ensure low-income children continue to receive nutritious meals when school is not in session. The approved SFSP sites were in areas with significant concentrations of low-income children. The free meals met Federal nutrition guidelines and were provided to all children 18 years old and younger.

Six elementary schools provide Saturday sack lunches

A Fresh Look...

This is the first edition of an accountability report designed to provide a snapshot of student performance across the school district. A goal is to package relevant data in a format that is easy for readers to understand. Three editions are planned for publication in the fall, winter, and spring. Content will change based on information available at the time, providing readers a fresh look at the strengths and weaknesses in different areas. This report is a work in progress. If you feel something is missing or have a suggestion to improve this report, please email communications@whitfield.k12.ga.us.

Free Meals in Summer 2013



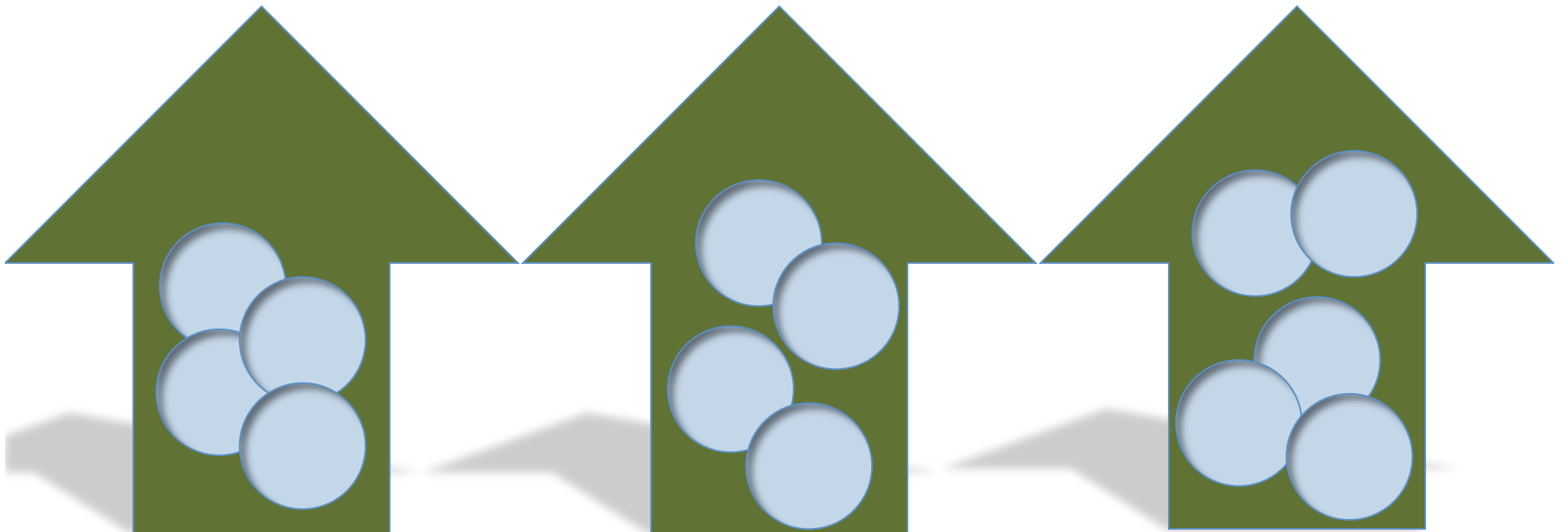
June: 113,082 July: 115,645



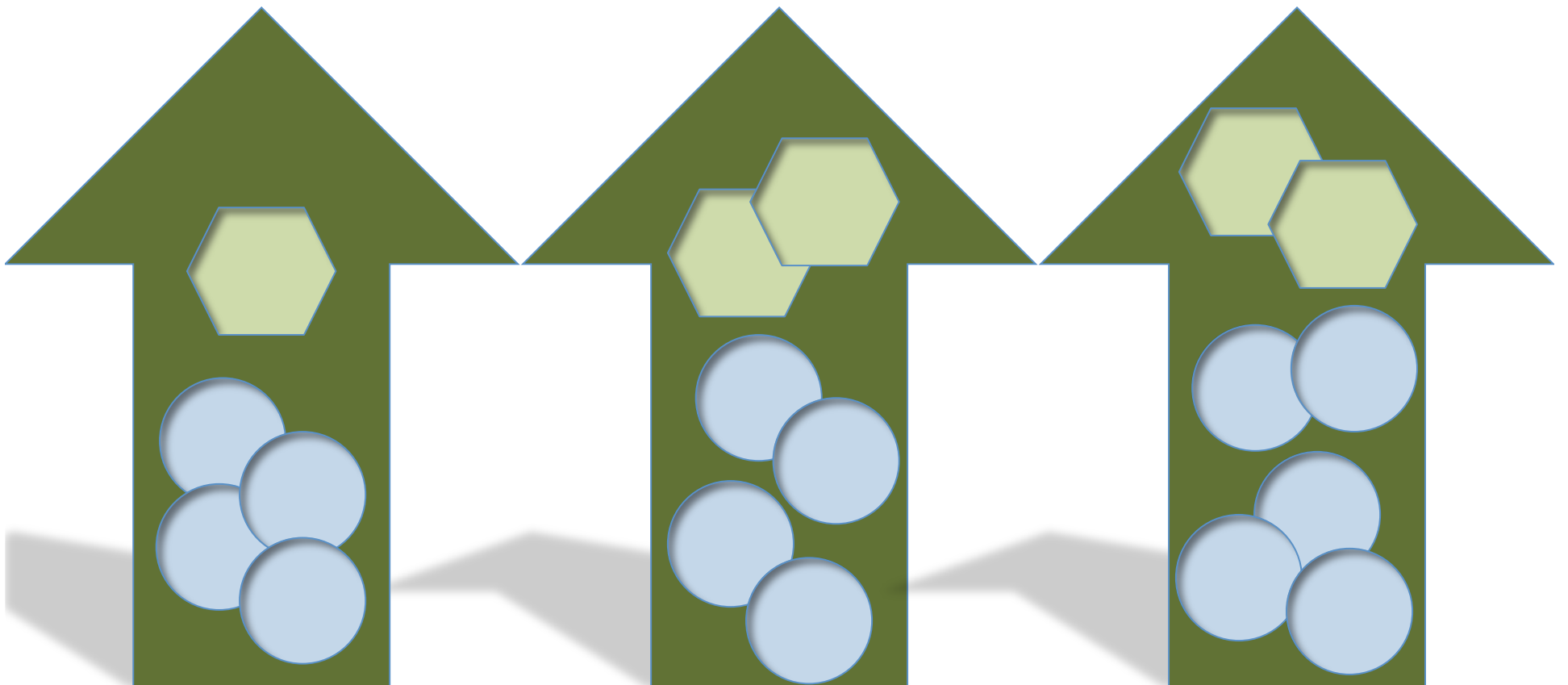
603,000 Free Meals in Three Years



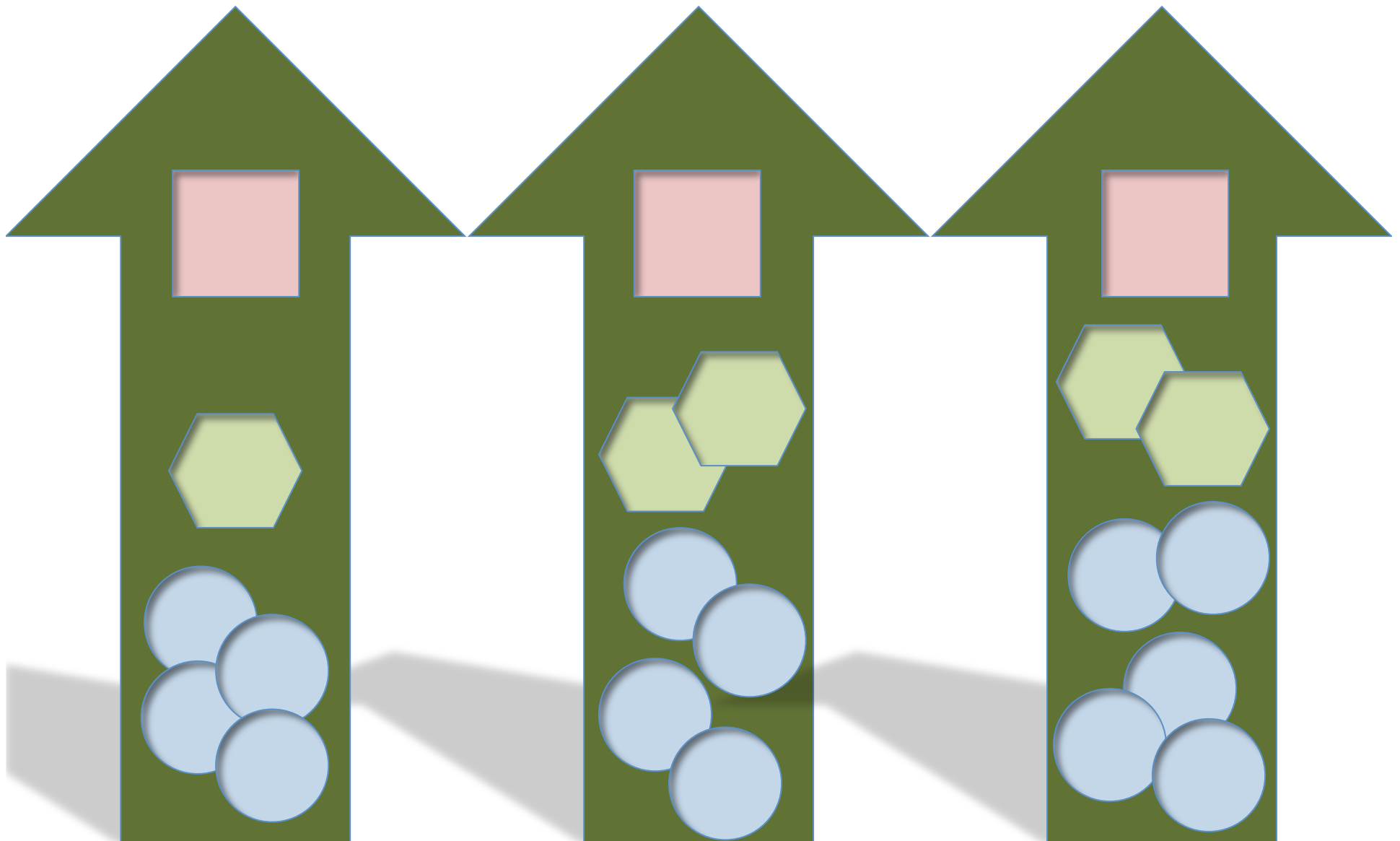
13 Elementary Schools



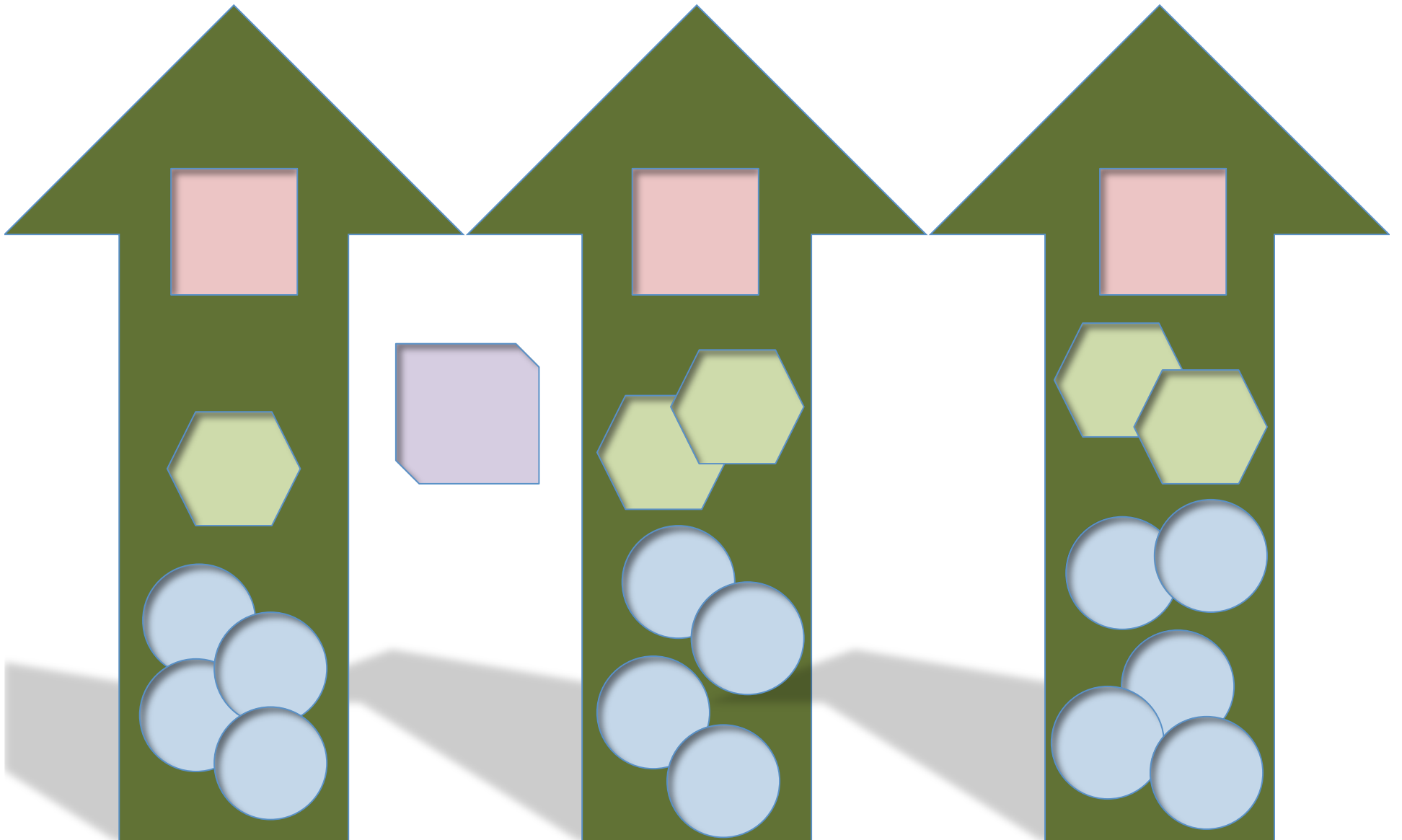
Five Middle Schools



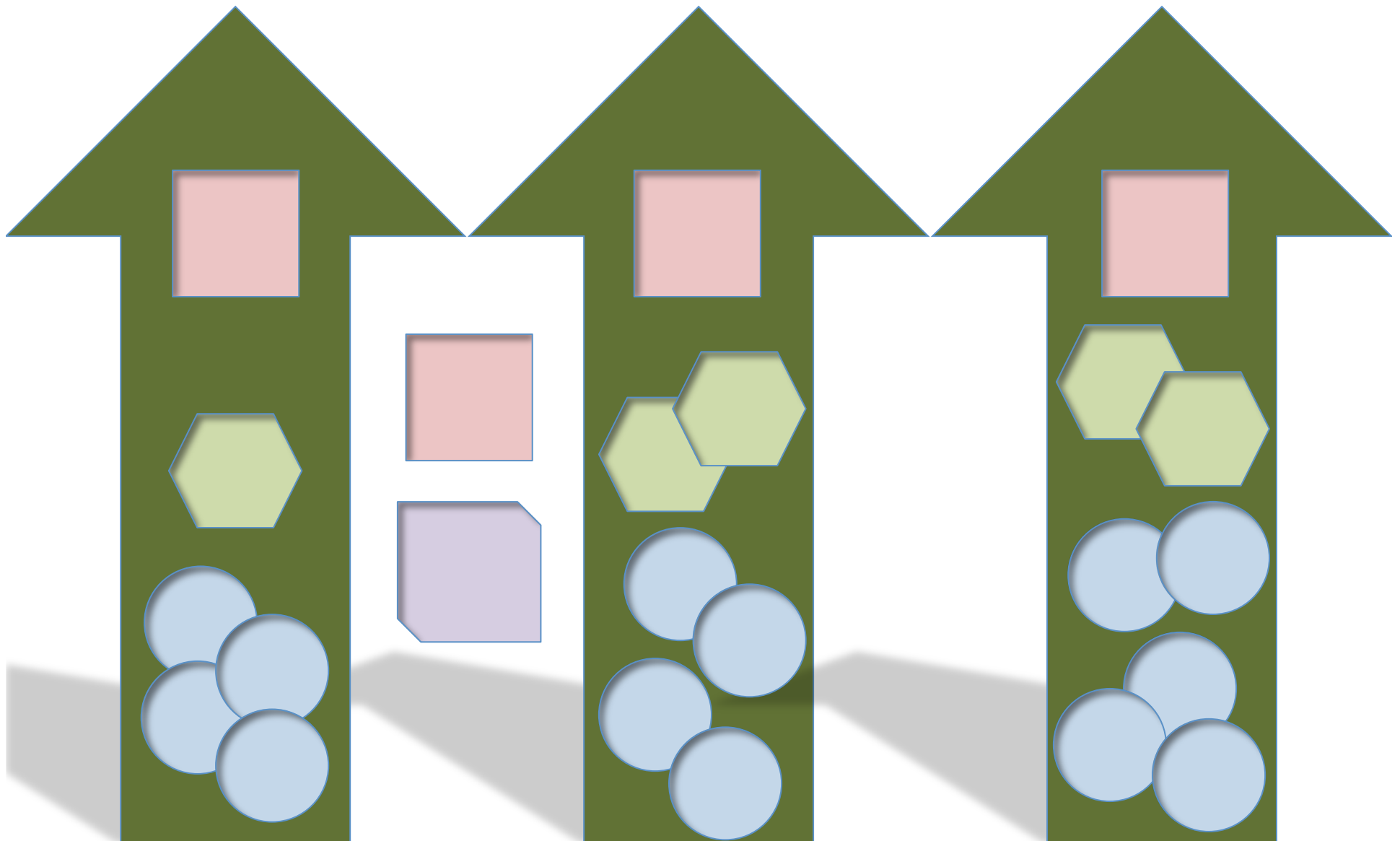
Three Traditional High Schools



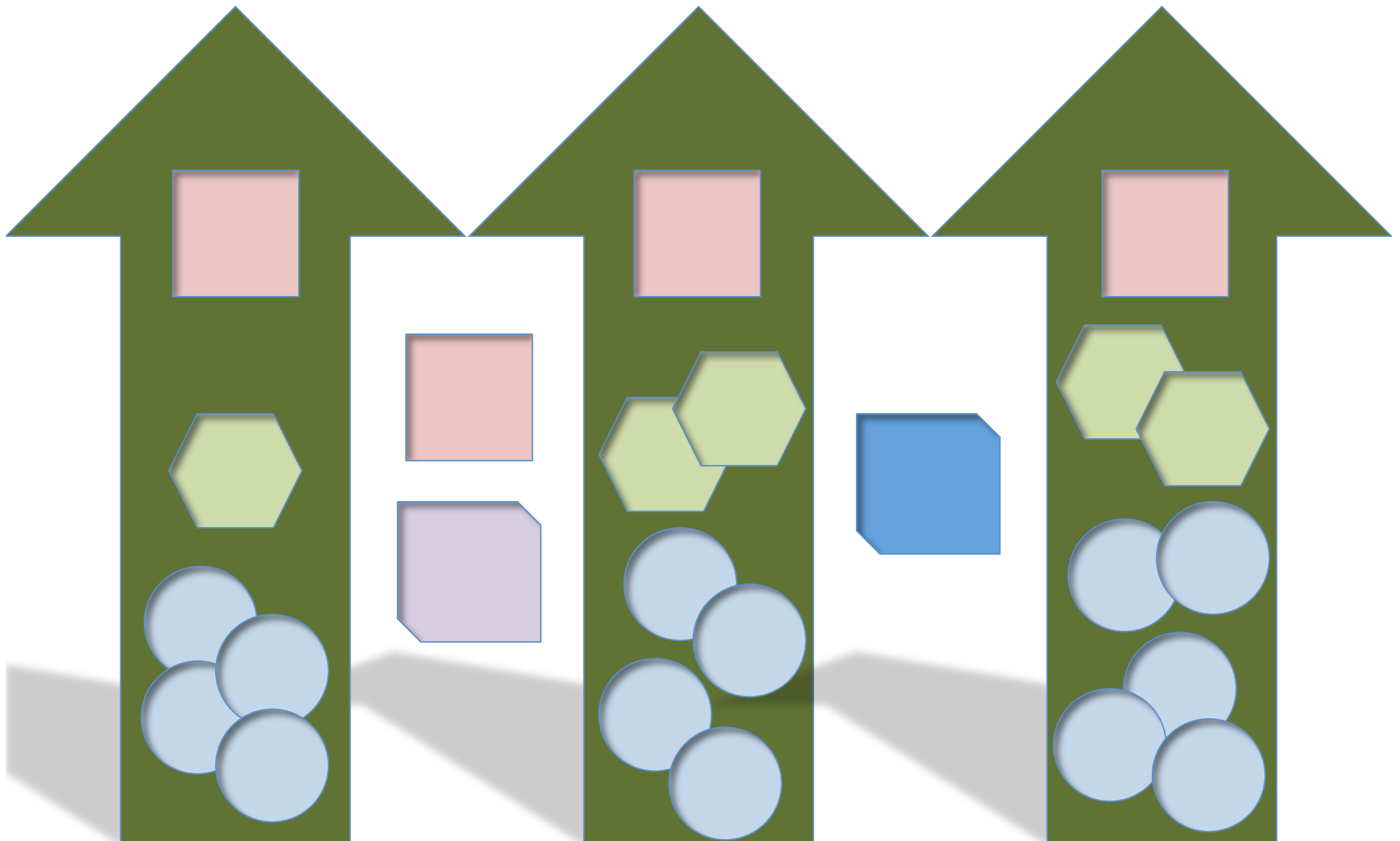
Special Purpose High School

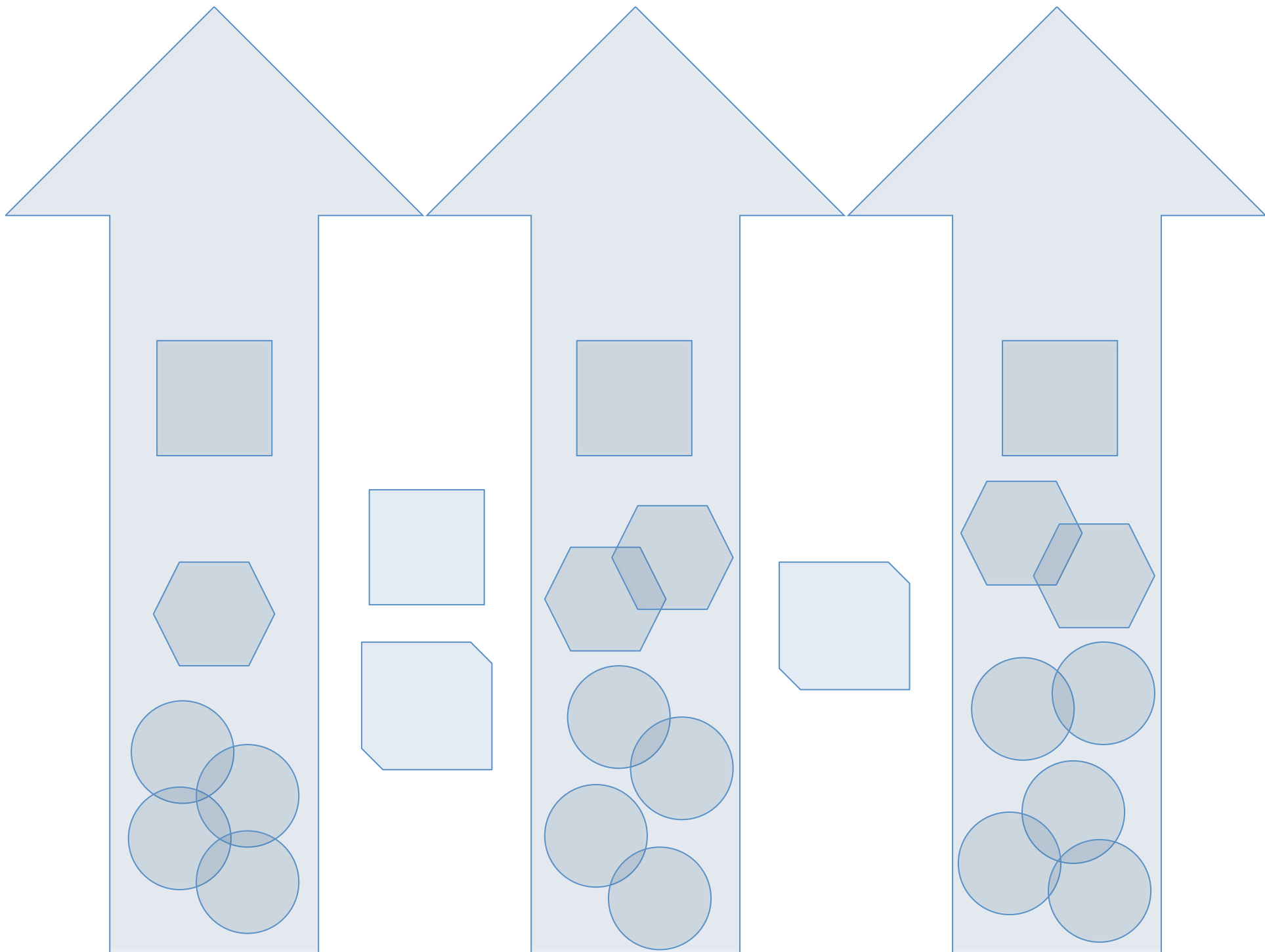


College & Career Academy



Alternative School







Our family of schools
works together
to prepare students for
Graduation, College,
& Careers



That's our system

We can't wait to share our stories with you!

Vision, Mission, and Beliefs

VISION, MISSION, AND BELIEFS

We envision a responsive school district that is committed to excellence and that is valued and respected by the community.

**We envision a responsive
school district that is
focused on students and
that is valued and
respected by the
community.**

Our mission is to increase
student learning by
providing students and
staff with meaningful,
challenging, and engaging
educational experiences in
a safe and supportive
environment.

5 Beliefs

We believe in our school district having an innovative unified focus resulting in it being responsive to the needs of students, parents, and the community at large.



**We believe that our core
business is providing
students with engaging,
challenging, and
meaningful work.**

**We believe that the role of
teacher is leader and designer
of engaging, challenging and
meaningful learning
experiences for students.**

**We believe that all of our
personnel, parents, and other
community members are vital to
the education of our students
whose attention and commitment
must be earned**

**We believe that all of our
students, personnel, and
parents deserve a safe, inviting,
non threatening learning
environment where they are
treated with dignity and respect.**

5 System Goals

Students and parents feel their schools and classrooms provide a physically and psychologically safe place where success is expected and failure is understood as a necessary part of learning.

Safe Environment

Teachers and administrators have a clear, consistent, and shared understanding of what students are expected to know and to be able to do at various grade levels.

Content &

Substance

Stakeholders interested in
school performance are
satisfied with the level and type
of learning in school.

Student Achievement

Nearly all classes are highly engaged. When they aren't, teachers are encouraged to redesign classroom activities to engage more students.

Teachers, administrators, and support staff are satisfied with their work and understand how their roles contribute to the district's direction.

Staff Engagement

A photograph of a male teacher with glasses, wearing a checkered shirt, leaning over a desk to assist a group of young students. The students are seated at the desk, and the teacher is pointing at a book or paper. The classroom background shows desks, computers, and educational posters on the wall.

Effective instructional practices in every classroom

NON-NEGOTIABLE PRACTICES

Teach with Fidelity

- Design lessons aligned to the Georgia Performance Standards and CCGPS
- Identify key concepts in the language of the standards
- Use essential questions to connect instruction to the standard
- Ask students to explain the standards in their own words

Monitor Progress

- Develop formative assessments that are explicitly aligned to standards
- Collect, chart, and analyze student work on a regular basis
- Identify students who are not meeting standards, meeting standards, or exceeding standards
- Adjust/Differentiate instruction based on assessment results
- Use a variety of instructional strategies to address student needs

Common Framework

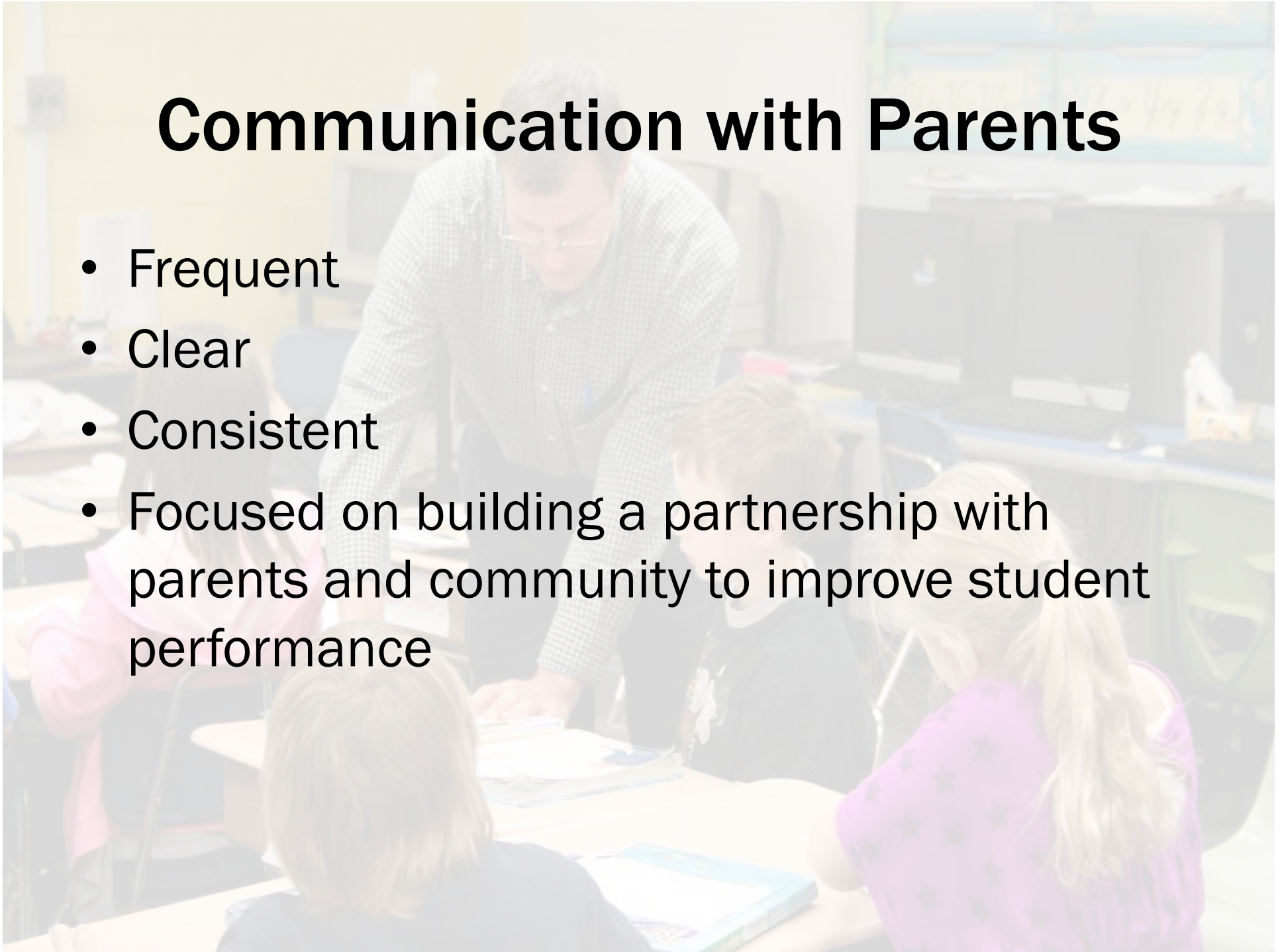
- **Opening**
Activating strategies centered on the standard, element(s), and essential question
- **Mini-lesson**
Modeling while referencing standards and key vocabulary
- **Using exemplars**
(examples of student work that meets or exceeds the standard)
- **Work Period**
Engaging students using performance tasks and using higher-order thinking questions to probe student understanding
- **Closing**
Summarizing strategies to assess student understanding

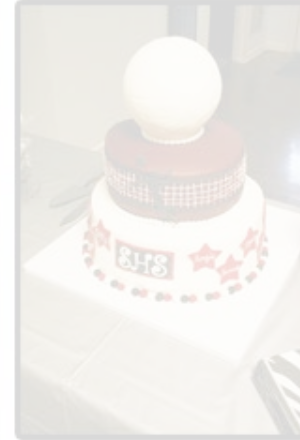
Classroom Environment

- Strong student-teacher relationships based on the school district's core values
- The social-emotional needs of our students
- Established rituals and routines
- Evidence of the common framework for instruction
- Evidence of student work that reflects the Georgia Performance Standards and CCGPS

Communication with Parents

- Frequent
- Clear
- Consistent
- Focused on building a partnership with parents and community to improve student performance

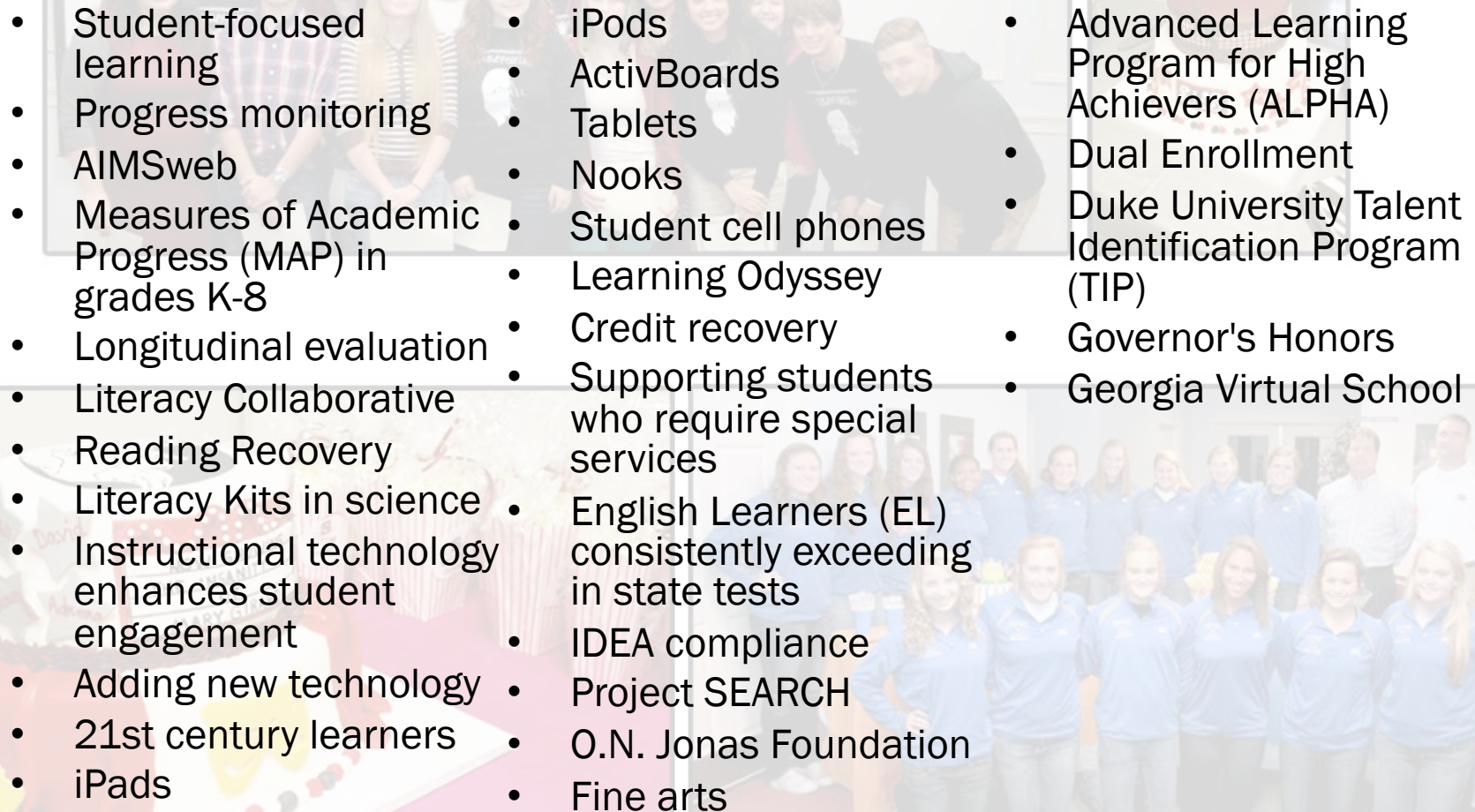




NOTABLE ACHIEVEMENTS



Student Learning

- 
- Student-focused learning
 - Progress monitoring
 - AIMSweb
 - Measures of Academic Progress (MAP) in grades K-8
 - Longitudinal evaluation
 - Literacy Collaborative
 - Reading Recovery
 - Literacy Kits in science
 - Instructional technology enhances student engagement
 - Adding new technology
 - 21st century learners
 - iPads
 - iPods
 - ActivBoards
 - Tablets
 - Nooks
 - Student cell phones
 - Learning Odyssey
 - Credit recovery
 - Supporting students who require special services
 - English Learners (EL) consistently exceeding in state tests
 - IDEA compliance
 - Project SEARCH
 - O.N. Jonas Foundation
 - Fine arts
 - Advanced Learning Program for High Achievers (ALPHA)
 - Dual Enrollment
 - Duke University Talent Identification Program (TIP)
 - Governor's Honors
 - Georgia Virtual School

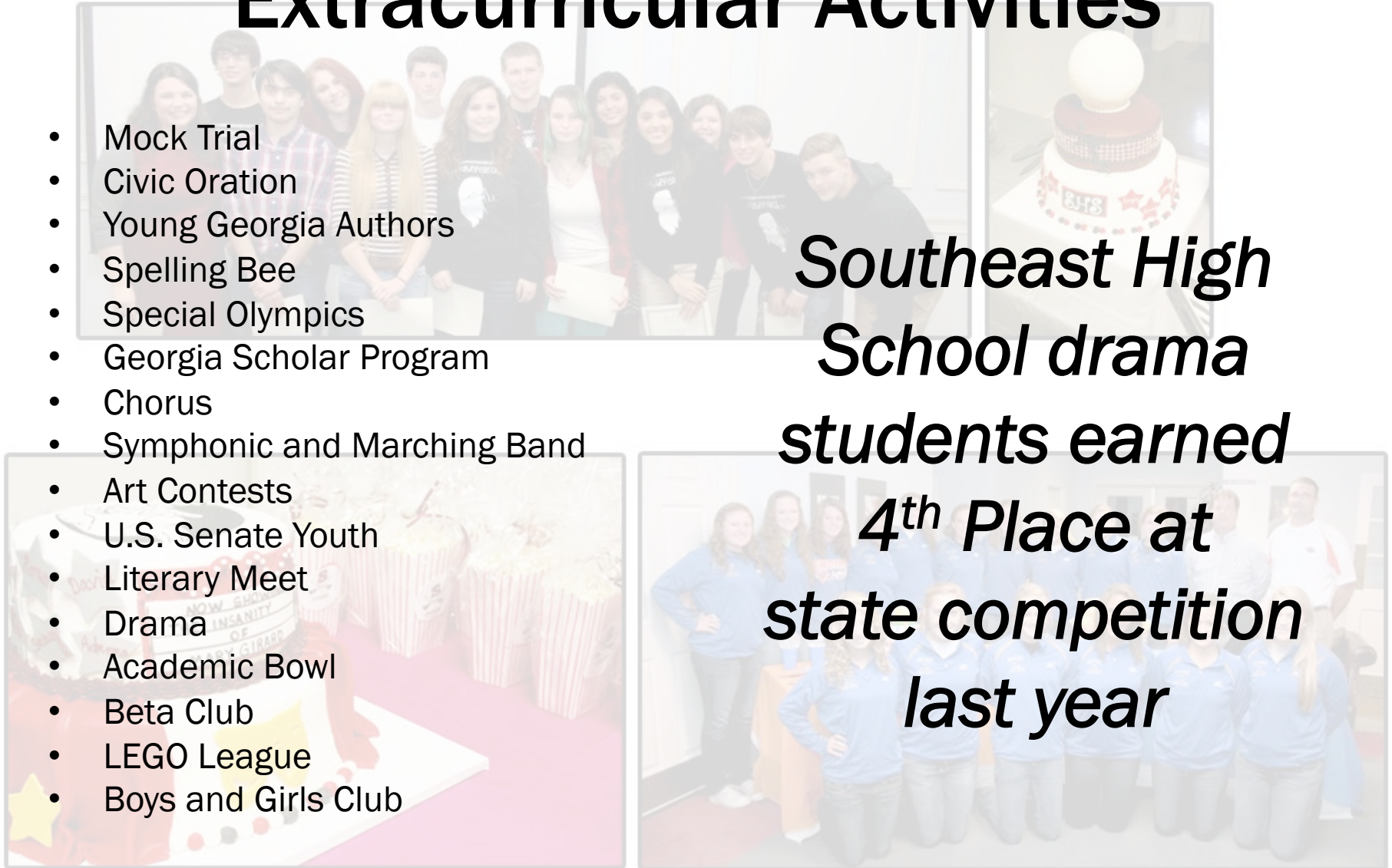
Professional Learning

- Strategically planned professional learning
- Continual learning
- Book studies
- Collaborative activities
- Collegial design sessions
- Content and support training for teachers at all levels
- Embedded professional readings
- Providing *time*
- Designing new units
- Integrating curriculum
- Customizing instruction
- Sheltered Instruction
- Observation Protocol (SIOP)
- Job-embedded coaching
- Immediate feedback for teachers
- Employ new strategies
- Differentiate for individual student needs
- Special Education training for core content teachers
- Differentiation strategies
- Inclusion teachers
- Co-teaching methodologies emphasis on math
- New Teacher Induction
- Innovators, Inc.
- Specialized trainings for school counselors and social workers
- Funding endorsements in gifted and ESOL
- Ongoing coaching support
- District instructional coaches

Extracurricular Activities

- Mock Trial
- Civic Oration
- Young Georgia Authors
- Spelling Bee
- Special Olympics
- Georgia Scholar Program
- Chorus
- Symphonic and Marching Band
- Art Contests
- U.S. Senate Youth
- Literary Meet
- Drama
- Academic Bowl
- Beta Club
- LEGO League
- Boys and Girls Club

***Southeast High
School drama
students earned
4th Place at
state competition
last year***





Service Projects

New Hope Middle School students raised money for The Water Project to build a well in Africa. Teachers pulled in lessons from math, science, English and social studies while students worked to provide water for an African village.



Service Projects

Middle school artists created artwork at the Guggenheim under the tutelage of studio artists during a trip to New York. They also studied theater arts and set design on Broadway. They shared their work at a two-week exhibit at the Whitfield County Courthouse.



Service Projects

Local students met with northwest Georgia region directors of the Fellowship of Christian Athletes before FCA region representative Chuck Harris presented the devotion for the Georgia General Assembly in February.

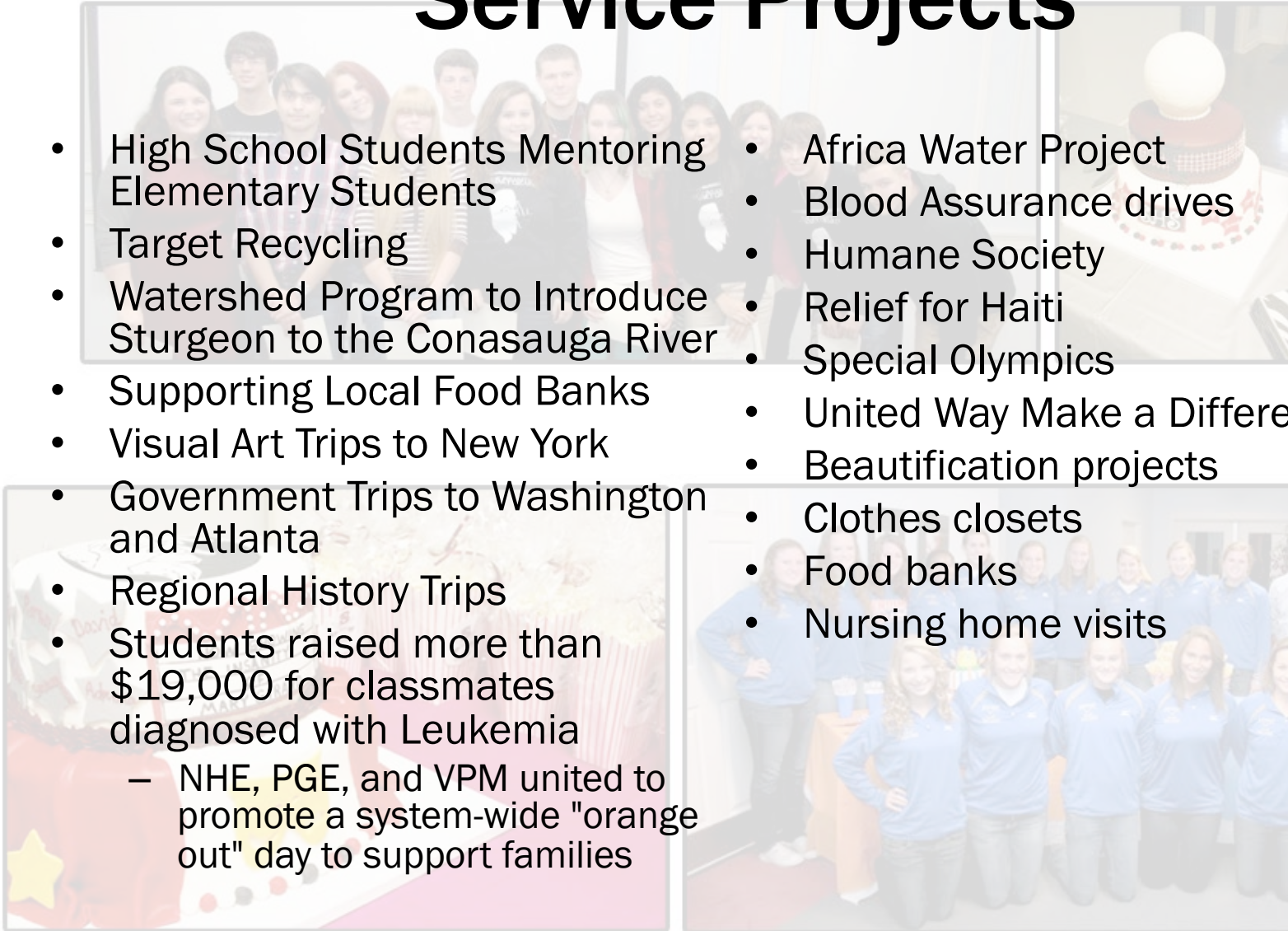


Service Projects

North Whitfield Middle School students work with officials with the state Department of Natural Resources to release sturgeon, an endangered species, into the Conasauga River.

Service Projects

- High School Students Mentoring Elementary Students
- Target Recycling
- Watershed Program to Introduce Sturgeon to the Conasauga River
- Supporting Local Food Banks
- Visual Art Trips to New York
- Government Trips to Washington and Atlanta
- Regional History Trips
- Students raised more than \$19,000 for classmates diagnosed with Leukemia
 - NHE, PGE, and VPM united to promote a system-wide "orange out" day to support families
- Africa Water Project
- Blood Assurance drives
- Humane Society
- Relief for Haiti
- Special Olympics
- United Way Make a Difference Day
- Beautification projects
- Clothes closets
- Food banks
- Nursing home visits



Athletic Opportunities

- Baseball
- Basketball
- Football
- Wrestling
- Swimming
- Softball
- Volleyball

*Northwest High School
Lady Bruins Softball
Team are the AAAA State
Champions*

- Spirit Cheerleading
- Competition Cheerleading
- Soccer
- Tennis
- Golf
- Cross Country
- Track and Field

*Southeast High School
Raiders Volleyball and
Soccer teams made the
state playoffs*



Community Engagement

A countywide Literacy Initiative supported by joint resolution of area educational and governing authorities launched in summer of 2012 with a Literacy Celebration at the community center in Dalton.

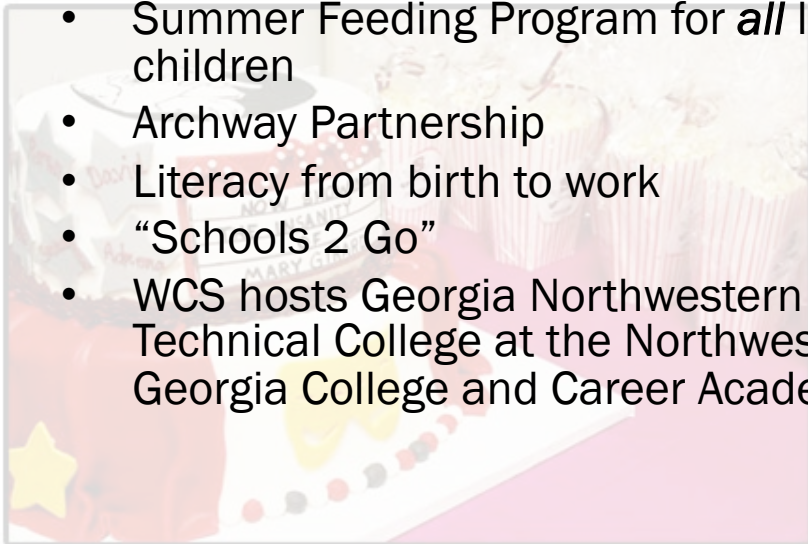
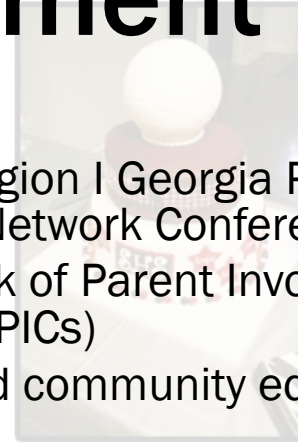
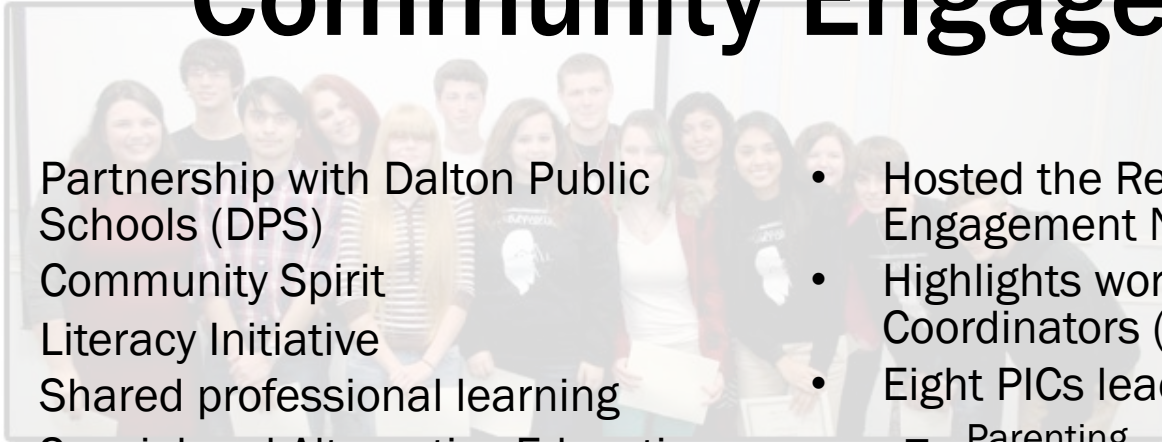


Community Engagement

Teen Maze provides a safe, controlled environment for students to face consequences of life-style choices often associated with risky behavior. The maze is set up as an interactive “Game of Life” allowing students to examine the consequences of life's choices in a hands-on, realistic, and educational way.

Community Engagement

- Partnership with Dalton Public Schools (DPS)
- Community Spirit
- Literacy Initiative
- Shared professional learning
- Special and Alternative Education Services at Northstar and Crossroads programs
- Summer Feeding Program for *all* local children
- Archway Partnership
- Literacy from birth to work
- “Schools 2 Go”
- WCS hosts Georgia Northwestern Technical College at the Northwest Georgia College and Career Academy
- Hosted the Region I Georgia Parent Engagement Network Conference
- Highlights work of Parent Involvement Coordinators (PICs)
- Eight PICs lead community education
 - Parenting
 - Computer literacy
 - Adult ESOL courses.





Post-Secondary Opportunities

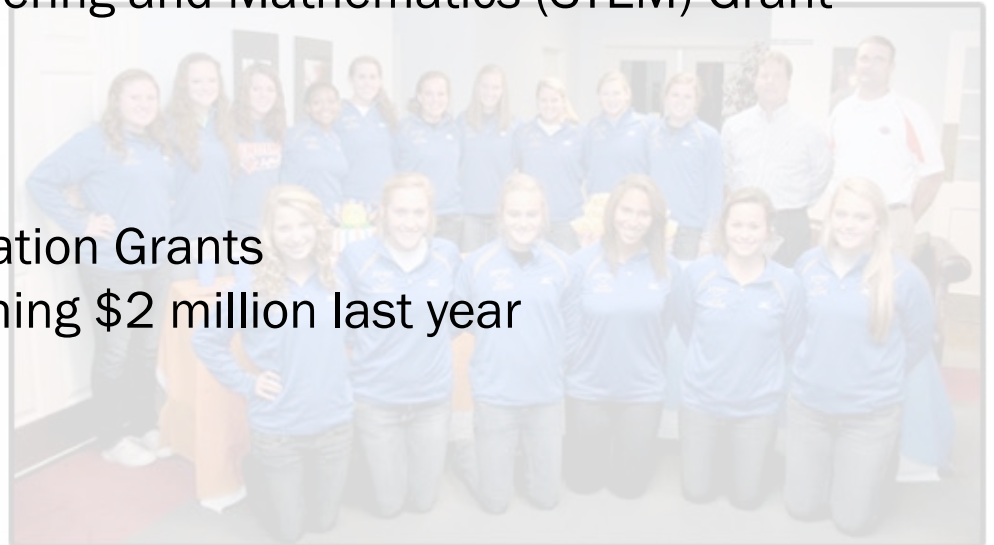
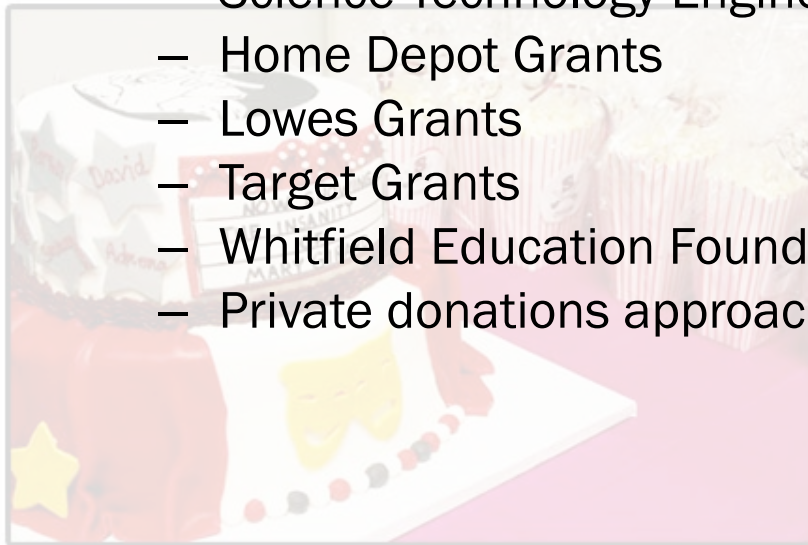
Georgia Northwestern Technical College expanded its reach to the campus at our Career Academy. College officials predict it will serve more students than any of its six campuses by next year.

High-Quality Teachers

- 100% of teachers and paraprofessionals are highly qualified as measured by the Georgia Professional Standards Commission & TII-A
- WCS believes teachers are learners evidenced by the following statistics:
 - 24.89% hold a bachelor's degree
 - 41.76% hold a master's degree
 - 29.37% hold a specialist degree
 - 4% hold a doctorate degree

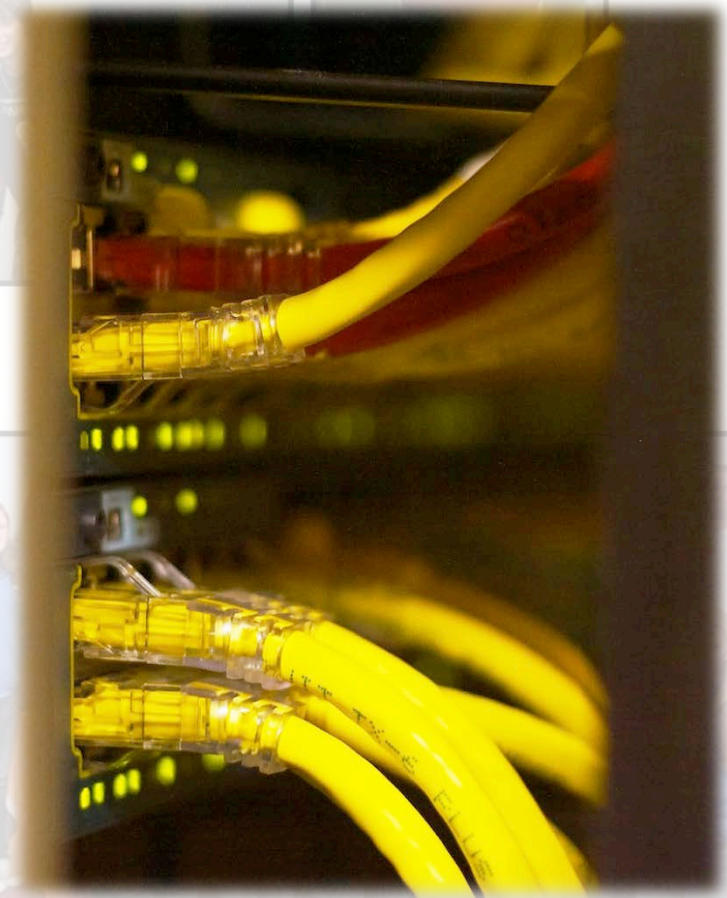
School Finance

- Voters have consistently supported schools by approving an Education Special Purpose Local Option Sales Task (ESPLOST)
- School board raised the millage rate in September 2012
- Grants supplement student learning opportunities
 - Georgia Appalachian Center of Higher Education (GACHE) Grant
 - Elementary School Breakfast Grant
 - Science Technology Engineering and Mathematics (STEM) Grant
 - Home Depot Grants
 - Lowes Grants
 - Target Grants
 - Whitfield Education Foundation Grants
 - Private donations approaching \$2 million last year



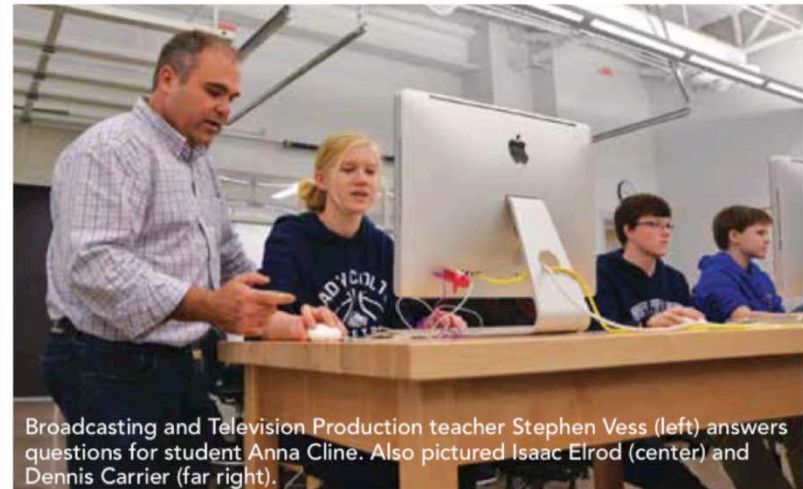
Technology Infrastructure

- Expanded digital technology infrastructure
- 21st-Century learning environment
- Wi-Fi in every building
- Wireless capabilities allow use of laptops and tablets
- WCS Internet filtering options centrally managed at student, teacher, and administrator levels
- Differentiated Internet access based on grade level
- K-8 academic classrooms equipped with digital projection systems
- Electronic white boards enrich learning
- Unified media center platform using Destiny operating system
- Keyless building access with security badges



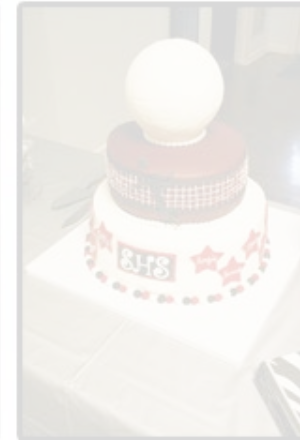
Technology Infrastructure

- Dedicated server handles Destiny system
- Servers operate in each building
- Infinite Campus, a student information system
- State Longitudinal Data System (SLDS) accessed through Infinite Campus
 - historical view of individual assessment data from Pre-K forward
 - curriculum standards
 - resource links to digital resources
- Expanded bandwidth to accommodate Bring Your Own Device (BYOD)
- Moving to cloud-based instructional model
- Virtual servers replacing existing servers



Broadcasting and Television Production teacher Stephen Vess (left) answers questions for student Anna Cline. Also pictured Isaac Elrod (center) and Dennis Carrier (far right).

Photo from Jan./Feb. 2013 edition of PAGE One Magazine

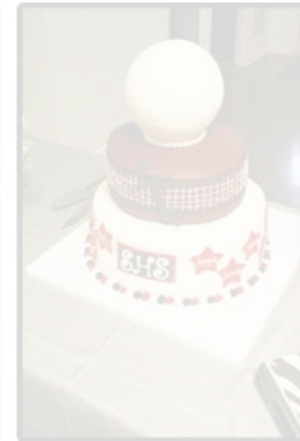
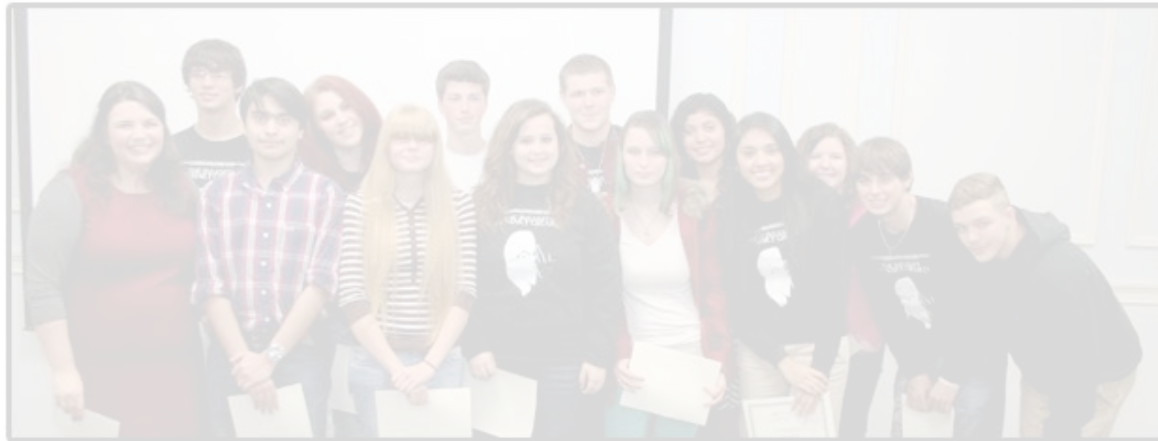


AREAS OF IMPROVEMENT



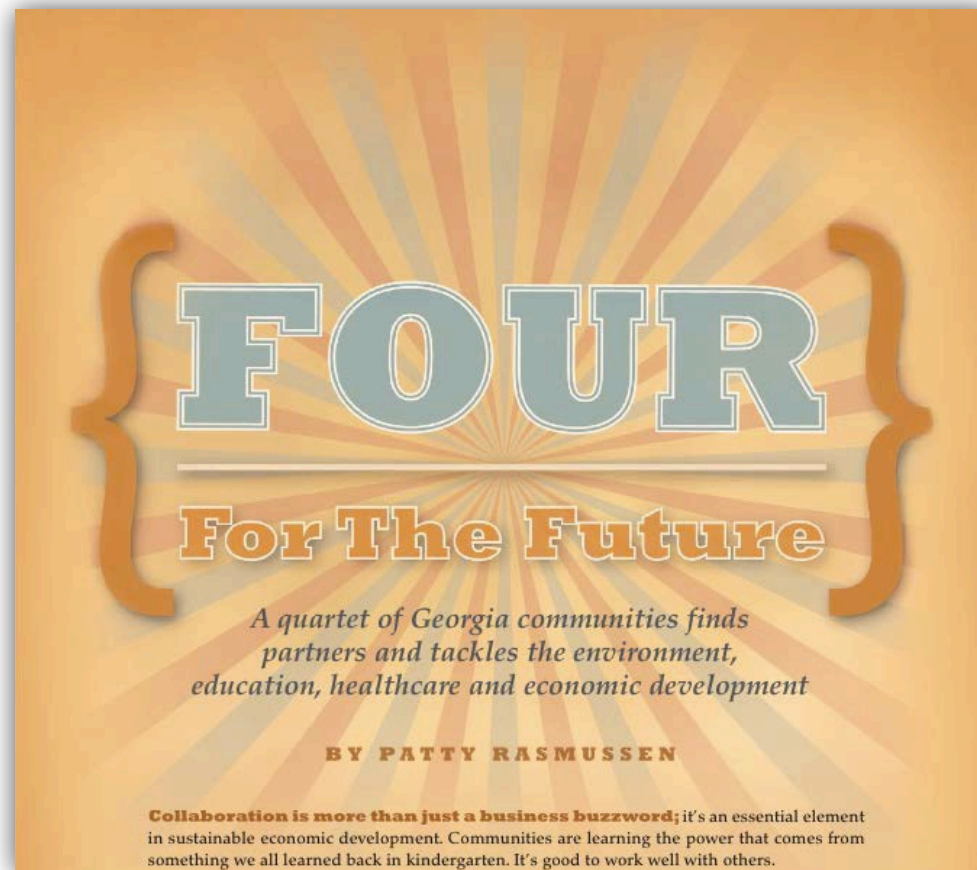
Areas of Improvement

- Monitoring and communication across several areas; specifically, WCS needs to target the following:
 - Develop and implement written protocols for clear and consistent communication
 - Formalize procedures for analysis of formative and summative assessment data
 - Establish procedures for accountability in professional learning.
 - Intentional measures to increase the graduation rate



A FEW MORE THINGS...





Awards and Distinctions

One of four recipients of Georgia Trend magazine's Four for the Future award to recognize communities that demonstrate collaboration, leadership, and innovation to protect the coast, improve literacy, develop the economy, and provide quality healthcare.



CONTRIBUTED PHOTO

Local stakeholders receive the Four for the Future award. From left are Sue Chapman, University of Georgia Archway Partnership; Superintendent Jim Hawkins, Dalton Public Schools; Mayor David Pennington, city of Dalton; Pam Partain, chair of the Readers to Leaders initiative; Superintendent Judy Gilreath, Whitfield County Schools; Barbara Ward, Greater Dalton Chamber of Commerce and Joint Development Authority; and Chairman Louis Fordham, Whitfield County Board of Education.

Readers to Leaders program receives Four for the Future award



Awards and Distinctions

Eastside Elementary teacher Cyndi King accepts the VFW Georgia Teacher of the Year from Post 4985 Commander Ed Kinney. King's students worked with local veterans to research, design, and publish "World War II: From the Eyes of Children," a project funded by an Innovative Teaching Grant from the Whitfield Education Foundation.



Awards and Distinctions

Dr. Billie Abney, a teacher at Southeast High School, was recently named the CHADD National Educator of the Year for her work with children and adults with attention deficit/hyperactivity disorder.



Awards and Distinctions

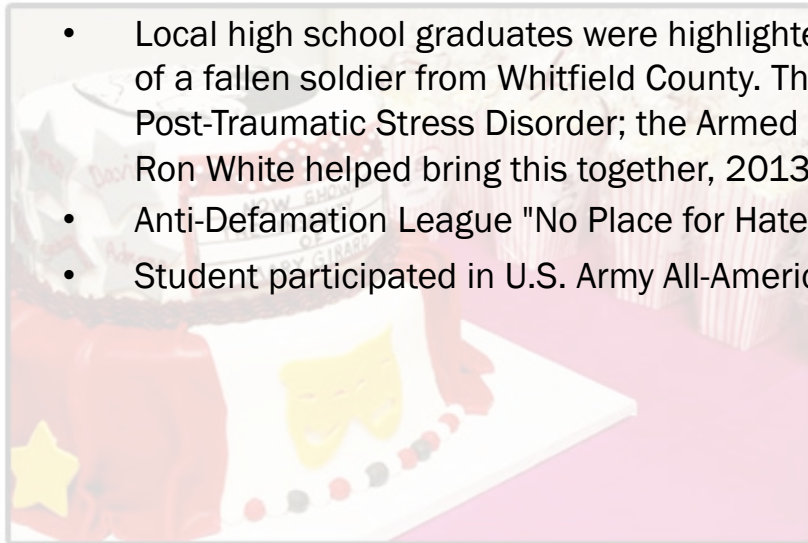
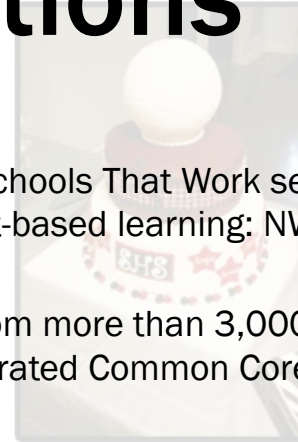
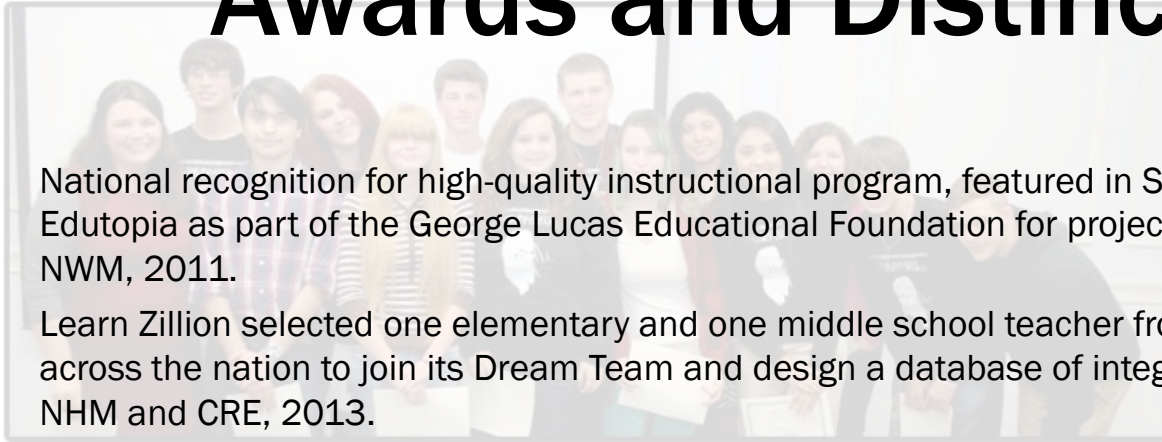
Two Whitfield County teachers—Rayda Reed from Cedar Ridge Elementary and James Morrison from New Hope Middle School—were selected to join the 2013 LearnZillion Dream Team.

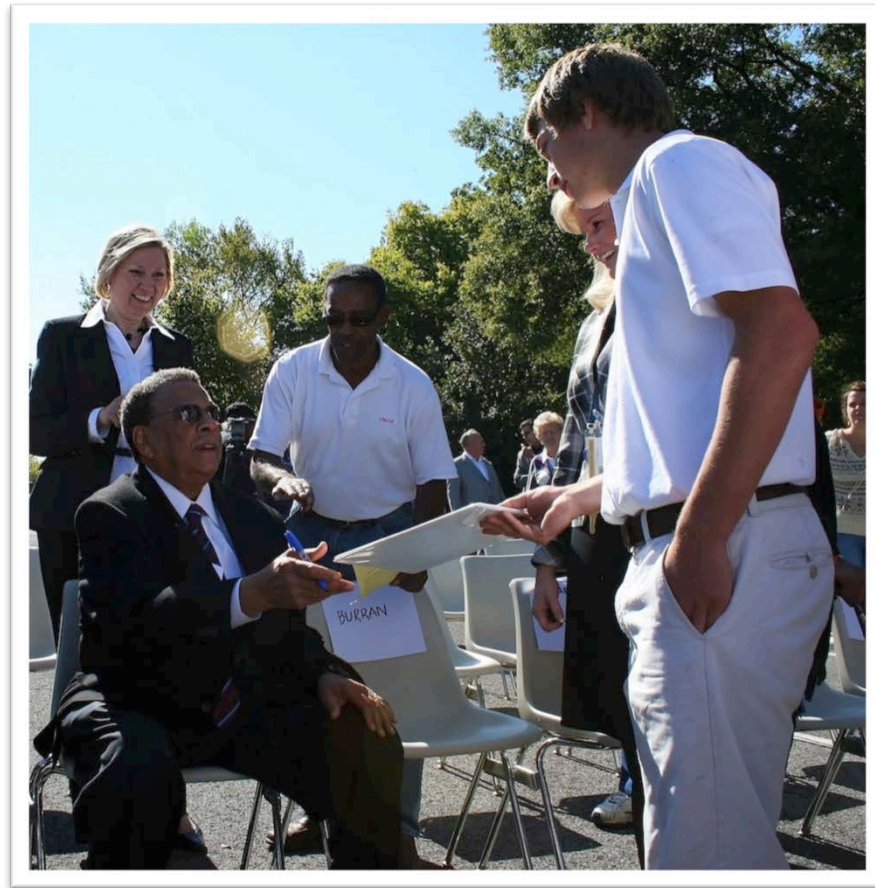
Awards and Distinctions

- Association for Supervision and Curriculum Development (ASCD) Whole Child recognition: NWGCCA, 2011.
- One of two GA schools selected as tour site for GA Organics, state and national educational and agricultural officials, to see a working and successful implementation of farm to school program (1 of 17 in state to pilot this program): NHS, 2012.
- Distinguished Title I Schools (2012): 8 years: CES, DGE, and NHE 7 years: AES, PGE, THE, VPE, VES, and WES 6 years: WMS 5 years: VPM 3 years: BES, DES, EES, and NHM
- WWII book published by 5th-grade students and their teacher from EES; recognized by the Veterans of Foreign Wars, 2012.
- GA Chamber of Commerce FOUR for the Future, awarded by UGA and GA Trend to four communities around the state doing progressive things despite the economic climate, 2013.
- GA Hispanic Construction Association State Award: WCS recognized for making a difference in the Hispanic community, 2012.
- Recognized by state superintendent for improvements on GHSGT (science, SS, and writing) and EOCT (science): PHS and NWGCCA, 2009.
- Successful opening of the 1st new comprehensive high school in 30 years: CCHS, 2011. Winners of Recycling Competition: 1st Place, DGE; 2nd Place, NHM; 3rd Place, PGE, 2012. Regional Career Fair: NWGCCA, 2012 and 2013. Regional technology fair designed and hosted: high schools, 2012 and 2013.

Awards and Distinctions

- National recognition for high-quality instructional program, featured in Schools That Work series in Edutopia as part of the George Lucas Educational Foundation for project-based learning: NWGCCA and NWM, 2011.
- Learn Zillion selected one elementary and one middle school teacher from more than 3,000 applicants across the nation to join its Dream Team and design a database of integrated Common Core lessons: NHM and CRE, 2013.
- U.S. Department of Education recognized the strong and successful EL programs at DES and PGE as exemplars and selected these schools as research sites, 2012.
- National Blue Ribbon School: THE, 2009.
- Local high school graduates were highlighted in a video depicting the story spreading across the nation of a fallen soldier from Whitfield County. The video's purpose was to help others who are affected by Post-Traumatic Stress Disorder; the Armed Forces Foundation, Country Music Television, and comedian Ron White helped bring this together, 2013.
- Anti-Defamation League "No Place for Hate" School Award: CRE, 2012.
- Student participated in U.S. Army All-American Marching Band: NHS, 2012.





Community Engagement

Former U.S. Ambassador and Congressman Andrew Young halts his entourage to have a seat, read, and discuss a paper written about him by a student at the Crossroads Academy.



Community Engagement

The Student-Focused Speaker Series brings renowned educators to Whitfield County for community discussions. Speakers have included Ron Berger, Yong Zhao, Larry Rosenstock, Ruby Payne, and more.

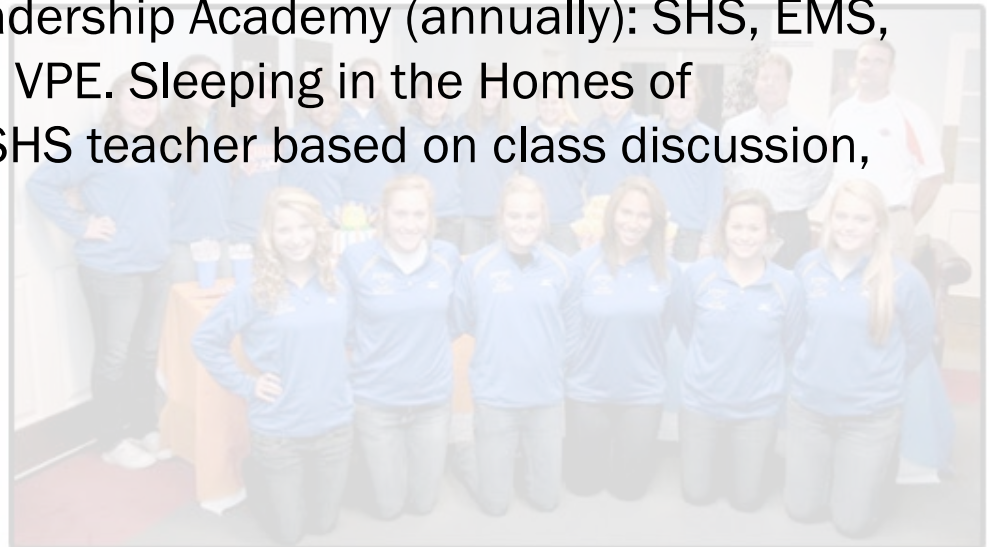
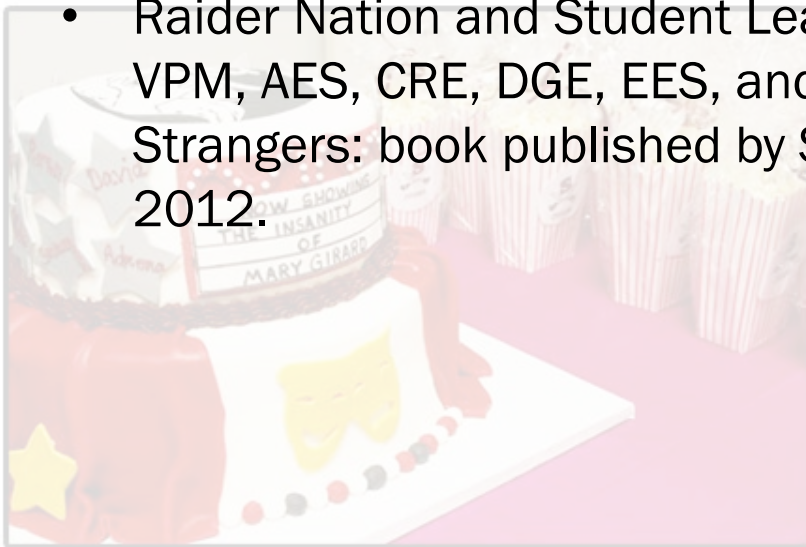


Community Engagement

Lunch and Learn: an educational summer program for children ages 3-5 and their parents. During lunchtime, children visit the "learn" center to enjoy engaging activities that build essential pre-k & kindergarten skills.

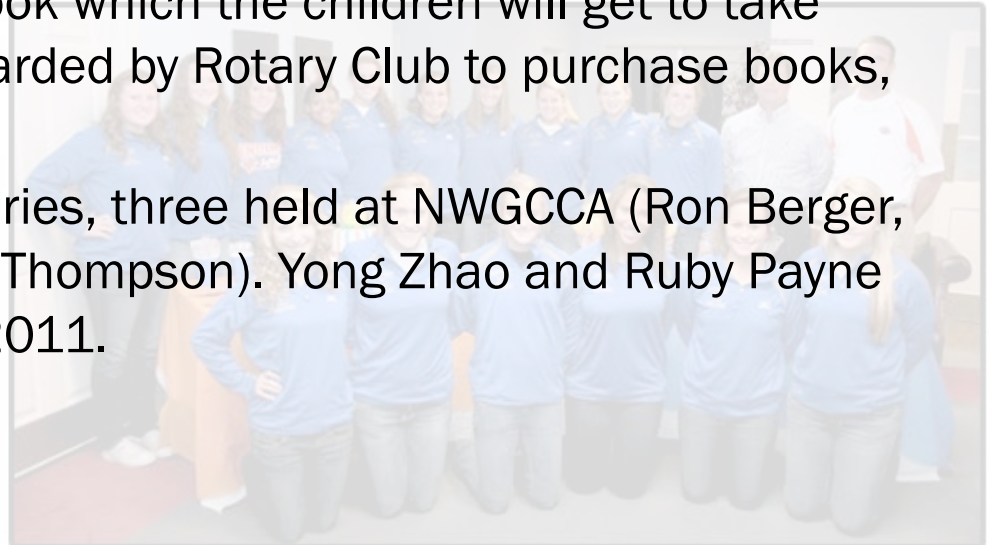
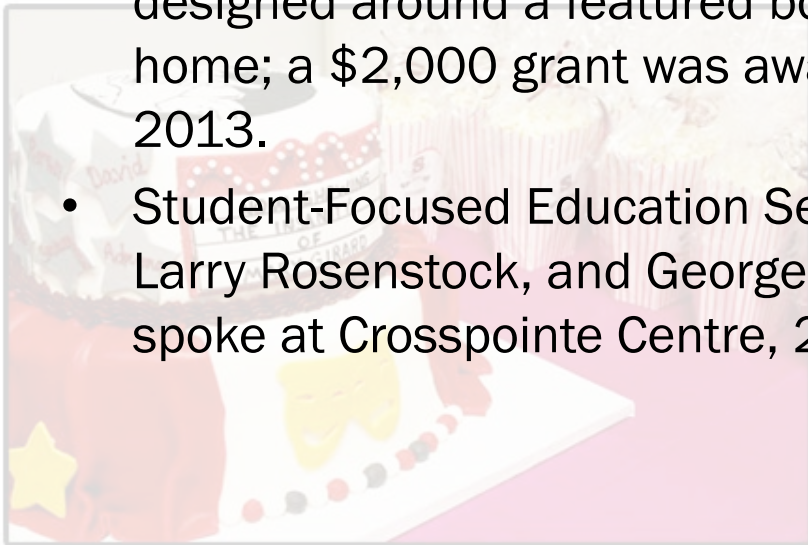
Community Engagement

- Andrew Young spoke at GA Historical Marker Dedication at Fort Hill School campus to honor African-American soldiers in combat: CR, 2010.
- James W. Stewart, a civil rights leader who led the first group of young marchers out of the Sixteenth Street Baptist Church in what became known as the 1963 Birmingham Children's March, came to speak to WCS 7th-graders at Crosspointe Christian Centre, 2013.
- Raider Nation and Student Leadership Academy (annually): SHS, EMS, VPM, AES, CRE, DGE, EES, and VPE. Sleeping in the Homes of Strangers: book published by SHS teacher based on class discussion, 2012.



Community Engagement

- Dalton Utilities (H2O in the Know) and GA Power (Learning Power) annually partner with schools to raise awareness about power and water conservation.
- Lunch and Learn: an educational summer program designed for children ages 3 - 5 and their parents. Families participate in activities to build essential skills for Pre-K and Kindergarten using everyday objects designed around a featured book which the children will get to take home; a \$2,000 grant was awarded by Rotary Club to purchase books, 2013.
- Student-Focused Education Series, three held at NWGCCA (Ron Berger, Larry Rosenstock, and George Thompson). Yong Zhao and Ruby Payne spoke at Crosspointe Centre, 2011.





Grants

The Whitfield Education Foundation invested \$21,683 in Innovative Teaching Grants for teachers across the school district to supplement classroom budgets and support engaging instruction.

Grants

- CTAE/STEM Grant (\$2.6 million), developed pathways in science, technology, engineering, and mathematics for middle school students; renovated facilities to incorporate STEM labs with the goal of exploring career opportunities before moving to high school: NWGCCA, EMS, NHM, NWM, VPM, and WSM, 2011.
- Lowe's Grant (\$100,000) for community literacy lab: SHS, 2011.
- Whitfield Education Foundation Grants: \$25,000 awarded annually to fund instructional innovation; WEF has operated locally for 15 years providing approximately \$430,000.
- Home Depot Grant (\$20,000) for outdoor reading garden: DES, 2010.
- More than \$15,000 in grants for an outdoor classroom, student service group, and sensory garden to teach science to kindergarten special education students: EES, multiple years.
- Dollar General Literacy Grant: DES (\$2,000) and VPM (\$3,000), multiple years. Georgia Appalachian Center for Higher Education (GACHE) Grant: PHS, NWGCCA and SHS, multiple years. United Way placed five AmeriCorps VISTA members in WCS at DES and EES, SHS, and two workers with Pre-K program, multiple years.



Innovation

During Design, Engineering, and Manufacturing (DEM) summer camp, campers get to learn about robotics, electronics, carpet design, tour advanced manufacturing facilities, and hone their team building skills.



Innovation

Georgia School Superintendent Dr. John Barge listens with state house and senate committee members while business partner Brian Cooksey describes the mechatronics curriculum and the lab students use.



Innovation

Eastside Elementary has hosted Viking Camp during the past two summers. It is completely funded by donations from members of the community and business partners who support education.



Innovation

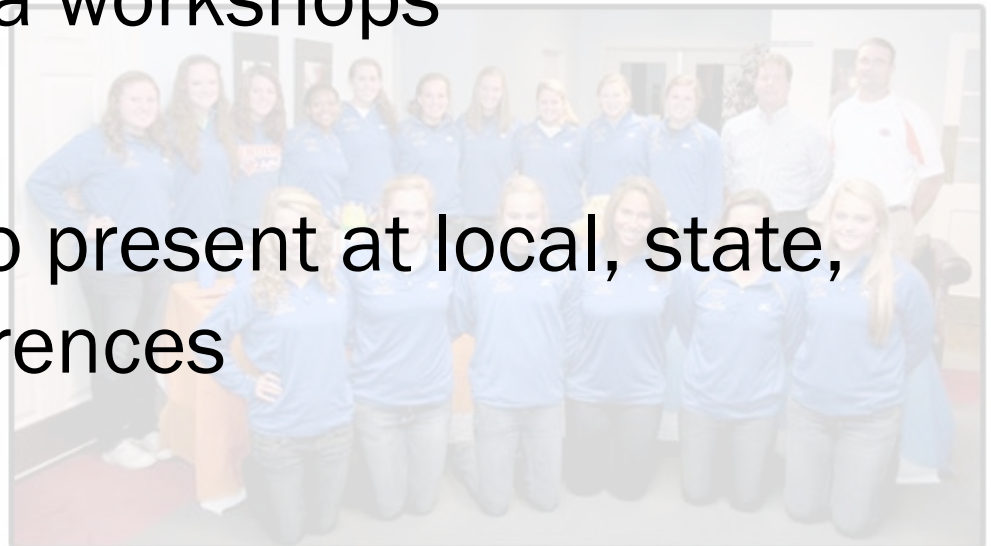
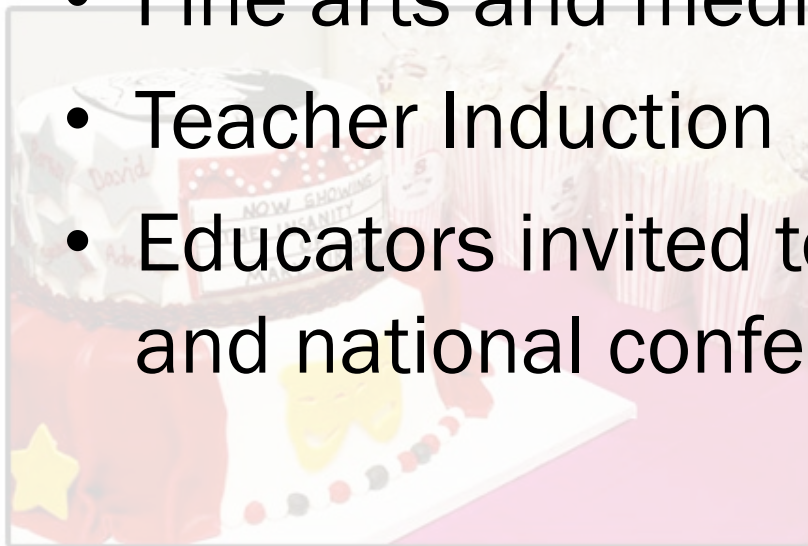
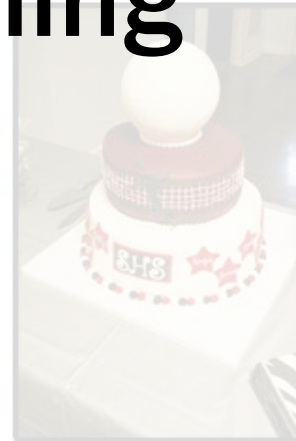
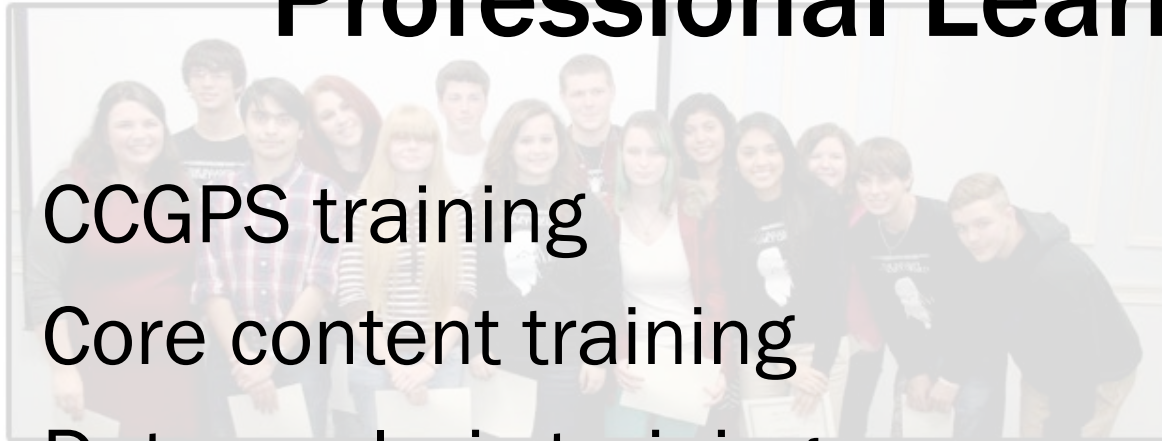
For two years in a row, Project SEARCH has been honored for placing graduates with special needs in the workforce.

Innovation

- Literacy Collaborative (LC) - LC is a comprehensive school literacy model that includes a wide range of individual, small-group and large-group reading, writing, and word study instruction guided by ongoing assessment. This model also involves school literacy teams, a highly qualified literacy coach, and bookrooms to support quality reading instruction, 2012.
- Innovators Incubator: Teams work on a challenge needing an innovative approach to move their school or department closer to the district direction. Challenges are reframed to align with one of these three social systems: directional, knowledge development and transmission, and induction and recruitment, 2013.
- Industry partners wrote state curriculum for mechatronics, the design process that includes mechanical, electrical, control, and computer engineering, 2013.
- NWGCCA campus shared with GA Northwestern Technical College to provide regional access and ease transition from high school to college and career, 2011.
- Design Engineering Manufacturing (DEM) Camp: partnerships with entrepreneurs for middle school students to develop skills, 2011. System Design Team guides implementation of teaching and learning framework while maintaining system focus.
- Induction programs for students: Camp Kodiak (NHM) and Viking Camp (EES), multiple years. Customizing connections classes based on student need and interest: VPM, 2013.

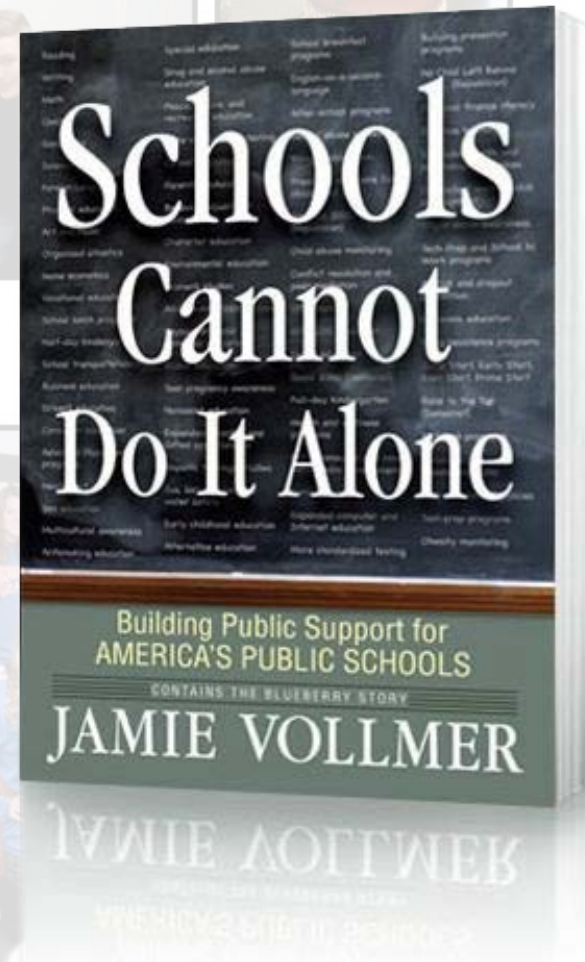
Professional Learning

- CCGPS training
- Core content training
- Data analysis training
- Fine arts and media workshops
- Teacher Induction
- Educators invited to present at local, state, and national conferences



Book Studies

- The World is Flat
- America's Failing Schools
- Ethic of Excellence
- Applebee's America
- Catching up or Leading the Way
- Drive
- Schools Cannot Do It Alone
- Framework for Understanding Poverty



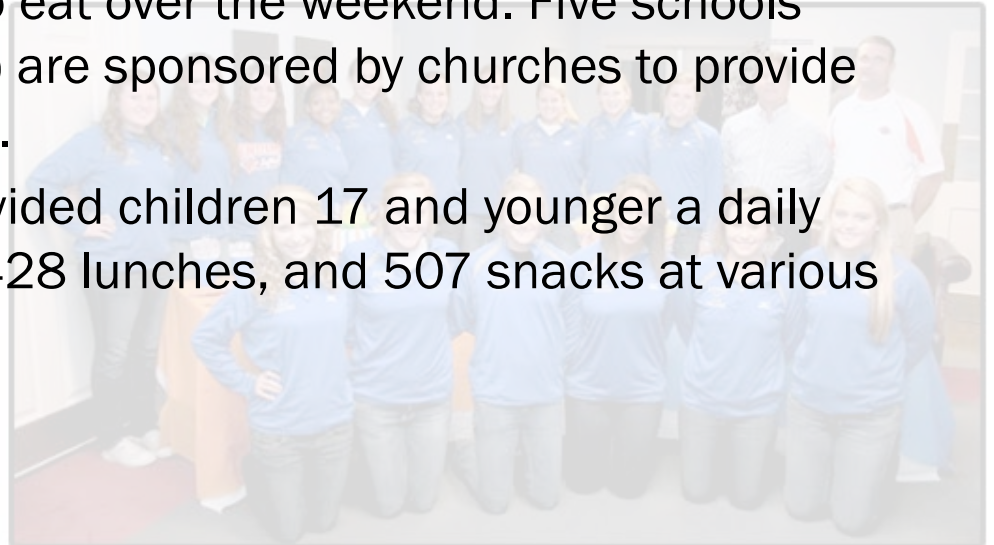
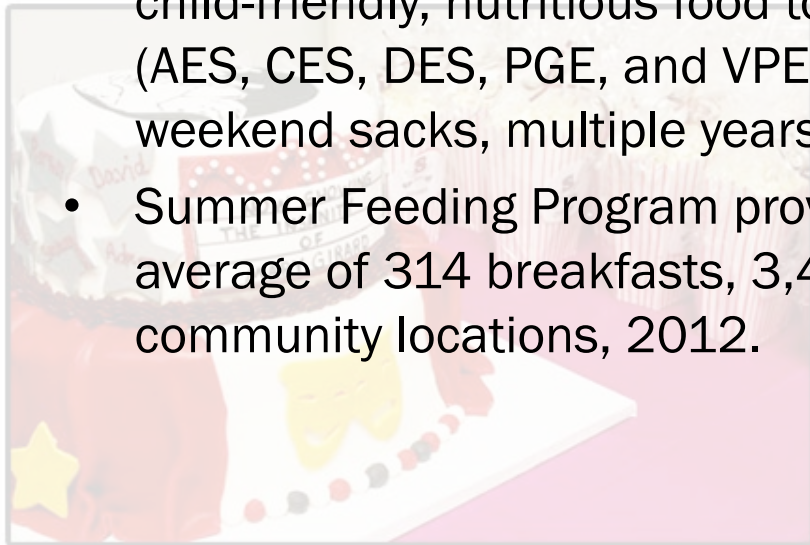


Supporting Community

The USDA Seamless Summer Feeding Program has enabled school nutrition staff to provide more than 600,000 meals in the last three years. Some schools send “Saturday Sacks” home on the weekends.

Supporting Community

- Federal program enables the WCS School Nutrition Department to provide free breakfast to approximately 6,500 elementary students. The system takes advantage of a "Non-Pricing" option due to the large percentage of students who are eligible for free and reduced-priced school meals, 2013.
- Saturday Sacks Program provides elementary students a small sack of child-friendly, nutritious food to eat over the weekend. Five schools (AES, CES, DES, PGE, and VPE) are sponsored by churches to provide weekend sacks, multiple years.
- Summer Feeding Program provided children 17 and younger a daily average of 314 breakfasts, 3,428 lunches, and 507 snacks at various community locations, 2012.



Questions

&

Answers